

# MR. DICKSON'S METHOD FOR BAND

## Book One

Alto Sax

www.JustinDickson.com

revised July 13, 2020

--- While You Are Playing ---

Tap your foot with the beat, during all notes and rests.

Count 1-2-3-4-1-2-3-4 in your mind while you play each measure (notes and rests).

Breathe on the beat before you start playing. Breathe together to play together.

Look ahead and get ready for the next measure when you can.

Sit up straight, take a big and relaxed breath every time, don't tense up.

--- Practice ---

Practice your instrument every day. Really. Every day.

Every day you practice, you will get stronger and better;

every day you don't practice, you will get weaker and worse.

It's not about how hard you try; it's about how often you try.

If you want to get good at something, you have to do it over and over and over again slowly.

If you make a mistake, stop and fix it. Do not just keep going, or it will not get better.

Practice with a metronome, to help you count and keep a steady beat.

Practice with the Bandmate Chromatic Tuner app to check your notes.

--- Strategies For Learning New Music ---

Slowwwwwww Dooooowwwwwnnnnnnn.

Slow down the tempo until you can play it without any mistakes, then play it correctly at that tempo 5-10 times before trying to speed up. Slow down again if you make mistakes.

Say the letter names of the notes out loud.

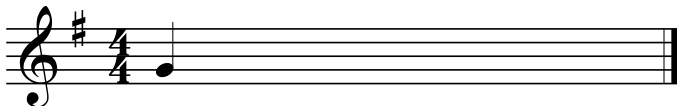
Say the rhythms out loud ("quarter quarter eighth eighth" etc.)

Tizzle, count, and/or clap the rhythm before you try to play the melody.

If you are having trouble playing the right notes, play through the melody holding each note for 3 seconds.

**CHAPTER 1: The band will be able to read, count, and play melodies with the pitches concert Bb, C, and D; and rhythms with quarter notes and quarter rests.**

1.01 Your first note



G

1.02 Quarter notes and quarter rests

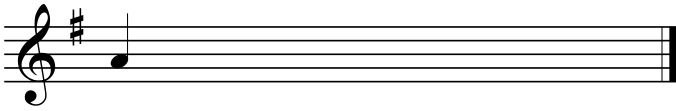


1 2 3 4 1 2 3 4

1.03 Quarter notes and quarter rests



1.04 Your next note



A

1.05 Quarter notes and quarter rests



1.06 Quarter notes and quarter rests



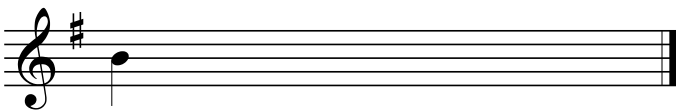
1.07 Quarter notes and quarter rests



1.08 Quarter notes and quarter rests



1.09 Your third note



B

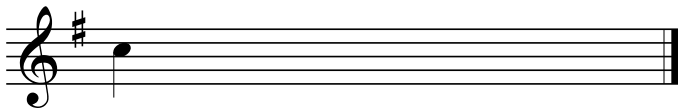
1.10 Quarter notes and quarter rests





**CHAPTER 2: The band will be able to read, count, and play melodies with the pitches concert Eb and F.**

2.01 New note!



C

2.02 Quarter notes and quarter rests



2.03 Quarter notes and quarter rests



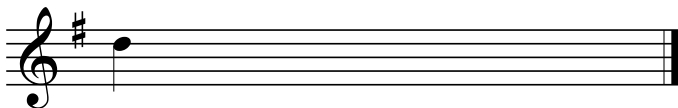
2.04 Quarter notes and quarter rests



2.05 Four note scale



2.06 New note!



D

2.07 Quarter notes and quarter rests



2.08 Quarter notes and quarter rests



2.09 Five note scale



2.10 Thirds



2.11 Thirds



2.12 Thirds



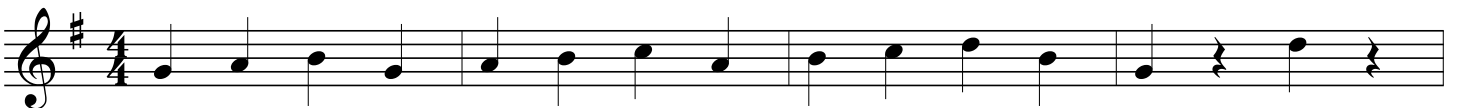
2.13 Flexibility



2.14 Get up and get down

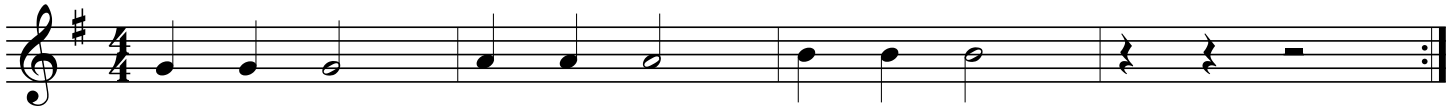


2.15 Super duper extra bonus beast mode star power etude for Narnia and Azeroth



**CHAPTER 3: The band will be able to read, count, and play melodies with half notes and half rests.**

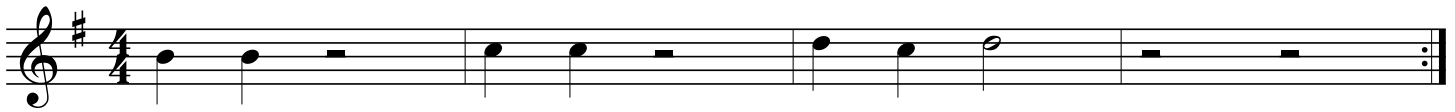
3.01 Half notes and half rests



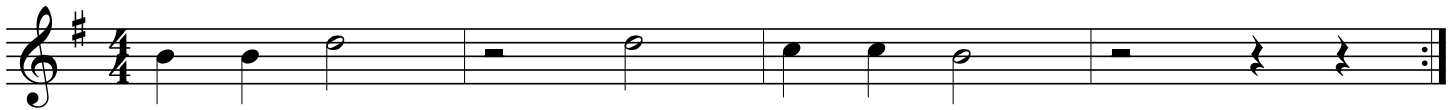
3.02 Half notes and half rests



3.03 Half notes and half rests



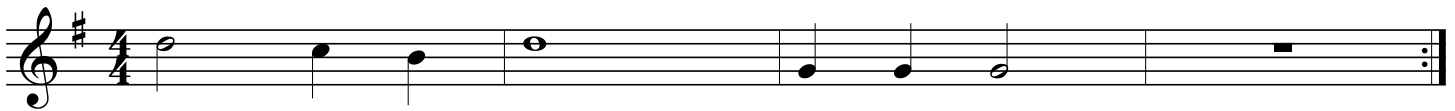
3.04 Half notes and half rests



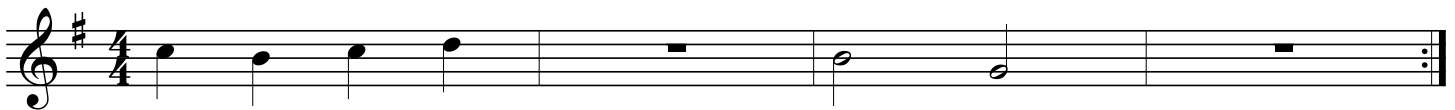
3.05 Whole notes and whole rests



3.06 Whole notes and whole rests



3.07 Whole notes and whole rests



3.08 Whole notes and whole rests





3.13 "Jingle Bells" with first and second endings

Musical notation for "Jingle Bells" in G major, 4/4 time. The first line shows the main melody. The second line shows two endings: the first ending leads back to the beginning, and the second ending concludes the piece.

**CHAPTER 4: The band will be able to read, count, and play melodies with the pitch concert G.**

4.01 New note!

Musical notation showing a single note (E) on a treble clef staff in G major.

E

4.02 Three note scale

Musical notation showing a three-note scale (E, F#, G) on a treble clef staff in G major.

4.03 Help for the brass

Musical notation showing a melody on a treble clef staff in G major, with a rest for the brass instrument.

4.04 "Twinkle Twinkle Little Star" - W.A. Mozart

Musical notation for "Twinkle Twinkle Little Star" by W.A. Mozart, in G major, 4/4 time, consisting of three staves.



4.05 "Repeat Then Move On Blues" - Dickson

Two staves of music in 4/4 time, key of D major. The first staff contains a melody with a repeat sign at the end. The second staff contains a bass line.

**CHAPTER 5: The band will be able to read, count, and play melodies with eighth notes.**

5.01 Eighth notes and eighth rests

Two staves of music in 4/4 time, key of D major. The first staff shows a sequence of eighth notes and eighth rests. The second staff shows a sequence of eighth notes.

1 + 2 + 3 + 4 + 1 + 2 + 3 + 4 +

5.02 Eighth notes

Two staves of music in 4/4 time, key of D major. The first staff shows a sequence of eighth notes. The second staff shows a sequence of eighth notes.

1 + 2 + 3 + 4 + 1 2 3

5.03 Eighth notes

Two staves of music in 4/4 time, key of D major. The first staff shows a sequence of eighth notes. The second staff shows a sequence of eighth notes.

1 + 2 + 3 + 4 + 1 2 3

5.04 Eighth notes

Two staves of music in 4/4 time, key of D major. The first staff shows a sequence of eighth notes. The second staff shows a sequence of eighth notes.

1 + 2 3 + 4 1 2 3

5.05 Eighth notes

Two staves of music in 4/4 time, key of D major. The first staff shows a sequence of eighth notes. The second staff shows a sequence of eighth notes.

1 + 2 + 3 4 1 + 2 + 3

5.06 Eighth notes

Two staves of music in 4/4 time, key of D major. The first staff shows a sequence of eighth notes. The second staff shows a sequence of eighth notes.

1 + 2 + 3 4 1 + 2 + 3

5.07 "Jolly Old St. Nicholas"

Musical notation for "Jolly Old St. Nicholas" in 4/4 time. The melody is written on a single staff. It begins with a treble clef and a key signature of one sharp (F#). The melody consists of eighth and quarter notes, with some beamed eighth notes. The piece ends with a double bar line.

5.08 "This Old Man"

Musical notation for "This Old Man" in 4/4 time. The melody is written on a single staff. It begins with a treble clef and a key signature of one sharp (F#). The melody consists of quarter and eighth notes. The piece ends with a double bar line.

5.09 "Cafeteria Food Doesn't Seem Like Actual Food Blues" - Dickson

Musical notation for "Cafeteria Food Doesn't Seem Like Actual Food Blues" in 4/4 time. The melody is written on a single staff. It begins with a treble clef and a key signature of one sharp (F#). The melody consists of quarter and eighth notes, with several measures containing rests. The piece ends with a double bar line.

**CHAPTER 6: The band will be able to read, count, and play melodies with the pitch Ab, and dotted-half notes.**

6.01 New note!

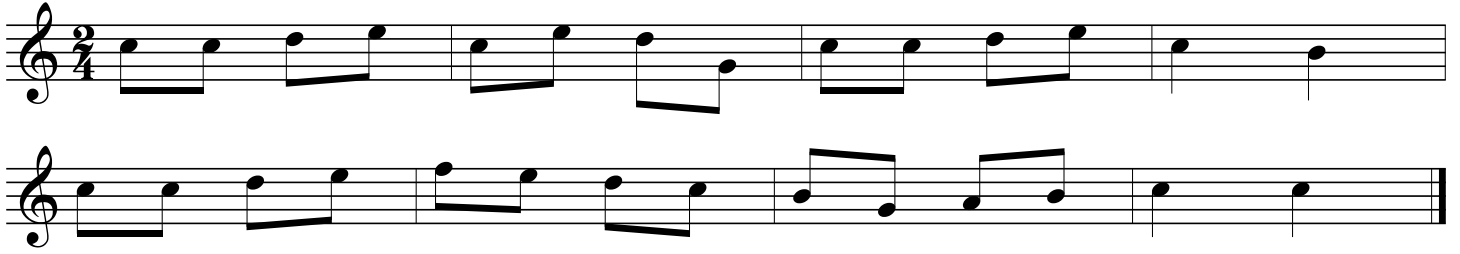
Musical notation for "New note!" in 4/4 time. The melody is written on a single staff. It begins with a treble clef and a key signature of one sharp (F#). The melody consists of a single dotted half note on the pitch Ab. The piece ends with a double bar line.

F

6.02 Three note scale

Musical notation for "Three note scale" in 4/4 time. The melody is written on a single staff. It begins with a treble clef and a key signature of one sharp (F#). The melody consists of a three-note scale: F, Ab, and Bb, each followed by a dotted half note. The piece ends with a double bar line.

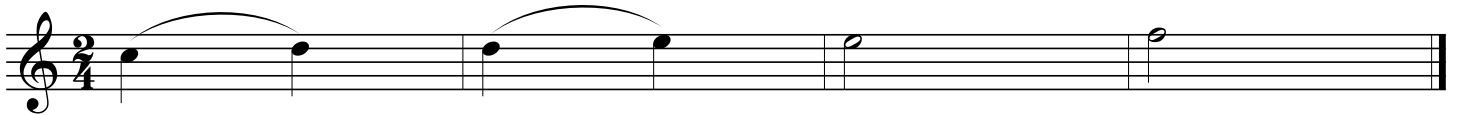
6.03 "Yankee Doodle"



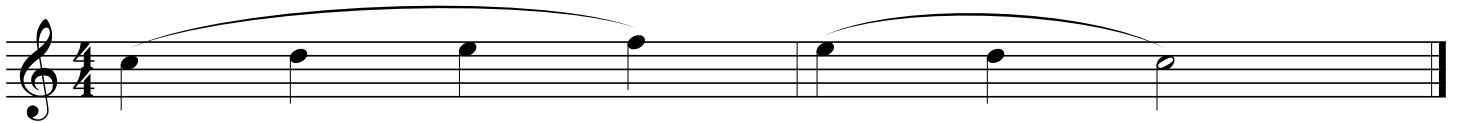
6.04 Slurs



6.05 Slurs

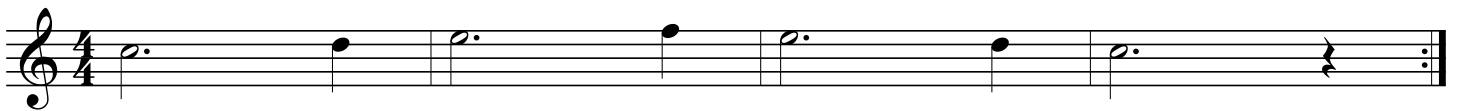


6.06 Slurs



6.07 Dotted-half notes

*tap your foot with the beat while you play!*



6.08 Etude



6.09 Etude

Two staves of musical notation for Etude 6.09. The music is in G major (one sharp) and 4/4 time. The first staff begins with a half note G4, followed by quarter notes A4 and B4, a dotted half note C5, and a half note D5. The second staff continues with quarter notes E5, F5, G5, and A5, followed by a half note B5 and a whole note C6.

6.10 "Jurassic Park"

Two staves of musical notation for "Jurassic Park". The music is in G major and 4/4 time. The first staff starts with a half note G4, followed by quarter notes A4 and B4, a dotted half note C5, and a half note D5. The second staff continues with quarter notes E5, F5, G5, and A5, followed by a half note B5 and a whole note C6.

6.11 "Covid-19 Blues" duet, part 1

Three staves of musical notation for "Covid-19 Blues" duet, part 1. The music is in G major and 4/4 time. The first staff begins with quarter notes G4, A4, B4, and C5, followed by a dotted quarter note D5 and a half note E5. The second staff continues with quarter notes F5, G5, A5, and B5, followed by a dotted quarter note C6 and a half note D6. The third staff continues with quarter notes E6, F6, G6, and A6, followed by a dotted quarter note B6 and a half note C7.

6.11 "Covid-19 Blues" duet, part 2

Three staves of musical notation for "Covid-19 Blues" duet, part 2. The music is in G major and 4/4 time. The first staff begins with a dotted quarter note D5 and a half note E5. The second staff continues with quarter notes F5, G5, A5, and B5, followed by a dotted quarter note C6 and a half note D6. The third staff continues with quarter notes E6, F6, G6, and A6, followed by a dotted quarter note B6 and a half note C7.



**CHAPTER 8: The band will be able to read, count, and play melodies with the pitch concert A, and rhythms with tied notes.**

8.01 New note!

Musical notation for 8.01 "New note!". It features a single treble clef staff with a key signature of one sharp (F#). The melody consists of a quarter note F# on the first line, followed by a whole rest, and then a whole note F# on the first line.

8.02 Etude

Musical notation for 8.02 "Etude". It features a single treble clef staff with a key signature of one sharp (F#) and a 4/4 time signature. The melody starts with a quarter note G4, a quarter note A4, and a quarter note B4. This is followed by a whole rest, then a quarter note G4, a quarter note F#4, a quarter note E4, and a quarter note D4, all beamed together. The piece ends with a quarter note C4 and a whole note G4.

8.03 "Hat Dance"

Musical notation for 8.03 "Hat Dance". It features a single treble clef staff with a key signature of one sharp (F#) and a 3/4 time signature. The melody consists of quarter notes G4, A4, B4, C5, B4, A4, G4, followed by a quarter rest, then quarter notes G4, A4, B4, C5, B4, A4, G4, followed by a quarter rest. A repeat sign follows, with two endings: 1. quarter notes G4, A4, B4, C5, B4, A4, G4; 2. quarter notes G4, A4, B4, C5, B4, A4, G4.

8.03 Ties

Musical notation for 8.03 "Ties". It features two treble clef staves with a key signature of one sharp (F#) and a 4/4 time signature. The top staff contains a melody of quarter notes G4, A4, B4, C5, B4, A4, G4, followed by a whole note G4. The bottom staff contains a melody of quarter notes G4, A4, B4, C5, B4, A4, G4, followed by a whole note G4. Ties connect the notes between the two staves.

8.04 Ties

Musical notation for 8.04 "Ties". It features a single treble clef staff with a key signature of one sharp (F#) and a 4/4 time signature. The melody consists of quarter notes G4, A4, B4, C5, B4, A4, G4, followed by a whole note G4. Ties connect the notes between the two staves.

8.05 "Deck The Halls"

Musical notation for 8.05 "Deck The Halls". It features a single treble clef staff with a key signature of one sharp (F#) and a 4/4 time signature. The melody consists of quarter notes G4, A4, B4, C5, B4, A4, G4, followed by a quarter note G4, a quarter note A4, a quarter note B4, and a quarter note C5, all beamed together. The piece ends with a quarter note G4 and a whole note G4.

8.06 "Spooky Song" - Dickson



This \_\_\_\_\_ song is so spoo - ky, I \_\_\_\_\_ am so af - raid,



Lots \_\_\_\_\_ of ties, I \_\_\_\_\_ think I am \_\_\_\_\_ too scared to play!

8.07 "Ode To Joy" - Ludwig Van Beethoven



*notes with the Accent mark > should stand out,  
so blow a little more air at the beginning of the note.*

8.08 "Accent Blues"



**CHAPTER 9: The band will be able to read, count, and play melodies with the pitch concert G, accidentals, and rhythms with ties across the bar line.**

9.01 New note!

E

9.02 Five note scale

9.03 Ties

9.04 Ties

9.05 "Like And Subscribe To This Etude" - Dickson

9.06 "January February March" - Dickson



9.07 "Summertime" - George & Ira Gershwin

Musical score for "Summertime" in 4/4 time. The score consists of four staves. The first three staves are treble clef, and the fourth is also treble clef. The melody is written in a simple, lyrical style with many slurs and ties. The first staff begins with a whole rest, followed by a quarter note G4, a quarter note A4, a half note B4, and a half note C5. The second staff continues with a half note D5, a quarter note E5, a quarter note F5, a quarter note G5, a half note A5, a half note B5, and a half note C6. The third staff continues with a half note D6, a quarter note E6, a quarter note F6, a quarter note G6, a half note A6, a half note B6, and a half note C7. The fourth staff concludes with a half note D7, a quarter note E7, a quarter note F7, a quarter note G7, a half note A7, a half note B7, and a half note C8.

9.08 "End-Of-Grade Testing Blues" - Dickson

Musical score for "End-Of-Grade Testing Blues" in 4/4 time. The score consists of three staves, all in treble clef. The melody is written in a bluesy style with many slurs and ties. The first staff begins with a quarter note G4, a quarter note A4, a quarter note B4, a quarter note C5, a half note D5, a half note E5, a half note F5, and a half note G5. The second staff continues with a half note A5, a quarter note B5, a quarter note C6, a quarter note D6, a half note E6, a half note F6, a half note G6, and a half note A6. The third staff concludes with a half note B6, a quarter note C7, a quarter note D7, a quarter note E7, a half note F7, a half note G7, a half note A7, and a half note B7.

9.09 "The Medallion Calls" from Pirates Of The Caribbean

Musical score for "The Medallion Calls" in 3/4 time. The score consists of four staves, all in treble clef. The melody is written in a rhythmic, bluesy style with many slurs and ties. The first staff begins with a quarter note G4, a quarter note A4, a quarter note B4, a quarter note C5, a half note D5, a half note E5, a half note F5, and a half note G5. The second staff continues with a half note A5, a quarter note B5, a quarter note C6, a quarter note D6, a half note E6, a half note F6, a half note G6, and a half note A6. The third staff concludes with a half note B6, a quarter note C7, a quarter note D7, a quarter note E7, a half note F7, a half note G7, a half note A7, and a half note B7. The fourth staff concludes with a half note C8, a quarter note D8, a quarter note E8, a half note F8, a half note G8, a half note A8, and a half note B8.



9.14 "Linus And Lucy"

you can use this to play along with the recording of  
"Linus And Lucy" by Ellis and Wynton Marsalis on Youtube

Musical score for "Linus And Lucy" in A major (two sharps) and 4/4 time. The score consists of five staves. The first two staves show the main melody with a slur over the final two measures. The third staff contains two first endings, labeled "1." and "2.", with a repeat sign before the second ending. The fourth staff features a rhythmic accompaniment with eighth-note triplets and accents. The fifth staff shows a bass line with quarter notes and rests.

9.15 March

Musical score for "March" in A major (two sharps) and 4/4 time. The score consists of four staves. The first two staves show the main melody with accents and slurs. The third staff features a rhythmic accompaniment with eighth notes and rests. The fourth staff shows a bass line with quarter notes and rests.

9.16 "My Locker Won't Open" - Dickson

The musical score for "My Locker Won't Open" by Dickson is written in 4/4 time. It consists of three staves. The first two staves are identical and feature a melody of eighth and quarter notes with a final half note. The third staff continues the melody with a quarter note, a half note, and a final whole note.

9.17 "My Favorite Things"

The musical score for "My Favorite Things" is written in 3/4 time and consists of seven staves. The first six staves contain a continuous melody of eighth and quarter notes, with a key signature change to one sharp (F#) indicated by a sharp sign on the B line. The seventh staff features a melodic line with a long, sweeping slur over four half notes.

9.18 "Springtime Under Quarentine" - Dickson



**Fine**



**D.C. al Fine**

