

MR. DICKSON'S METHOD FOR BAND

Book One

Clarinet in B \flat

www.JustinDickson.com

revised July 13, 2020

--- While You Are Playing ---

Tap your foot with the beat, during all notes and rests.

Count 1-2-3-4-1-2-3-4 in your mind while you play each measure (notes and rests).

Breathe on the beat before you start playing. Breathe together to play together.

Look ahead and get ready for the next measure when you can.

Sit up straight, take a big and relaxed breath every time, don't tense up.

--- Practice ---

Practice your instrument every day. Really. Every day.

Every day you practice, you will get stronger and better;

every day you don't practice, you will get weaker and worse.

It's not about how hard you try; it's about how often you try.

If you want to get good at something, you have to do it over and over and over again slowly.

If you make a mistake, stop and fix it. Do not just keep going, or it will not get better.

Practice with a metronome, to help you count and keep a steady beat.

Practice with the Bandmate Chromatic Tuner app to check your notes.

--- Strategies For Learning New Music ---

Slowwwwwww Dooooowwwwwnnnnnnn.

Slow down the tempo until you can play it without any mistakes, then play it correctly at that tempo 5-10 times before trying to speed up. Slow down again if you make mistakes.

Say the letter names of the notes out loud.

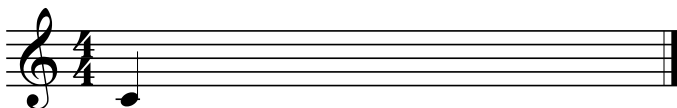
Say the rhythms out loud ("quarter quarter eighth eighth" etc.)

Tizzle, count, and/or clap the rhythm before you try to play the melody.

If you are having trouble playing the right notes, play through the melody holding each note for 3 seconds.

CHAPTER 1: The band will be able to read, count, and play melodies with the pitches concert B \flat , C, and D; and rhythms with quarter notes and quarter rests.

1.01 Your first note



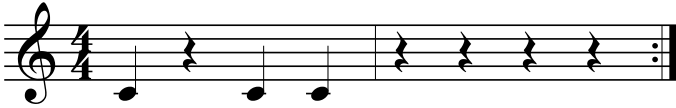
C

1.02 Quarter notes and quarter rests

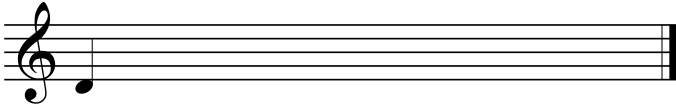


1 2 3 4 1 2 3 4

1.03 Quarter notes and quarter rests



1.04 Your next note



D

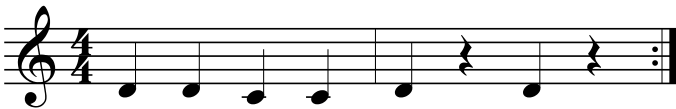
1.05 Quarter notes and quarter rests



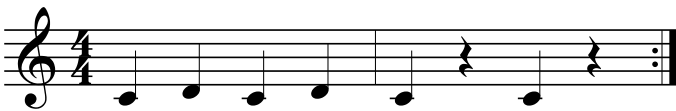
1.06 Quarter notes and quarter rests



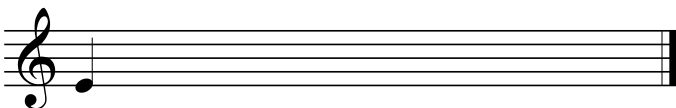
1.07 Quarter notes and quarter rests



1.08 Quarter notes and quarter rests



1.09 Your third note



E

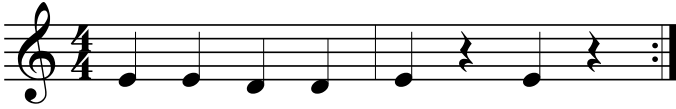
1.10 Quarter notes and quarter rests



1.11 Quarter notes and quarter rests



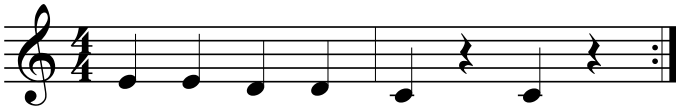
1.12 Quarter notes and quarter rests



1.13 Quarter notes and quarter rests



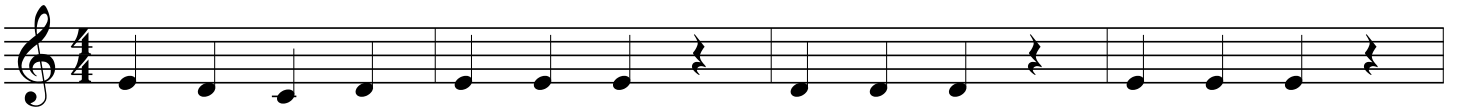
1.14 Quarter notes and quarter rests



1.15 Three note scale



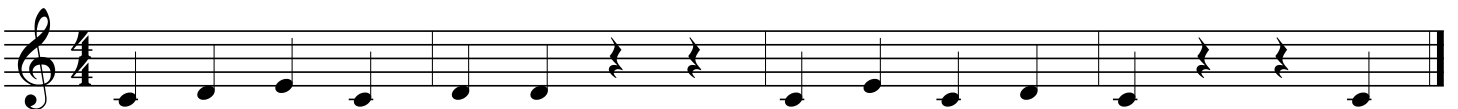
1.16 "Mary Had A Little Lamb"



*continue down to
the next line >>>>*

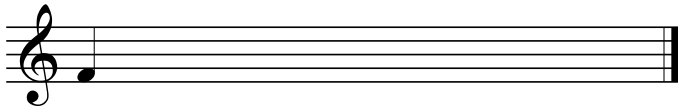


1.17 Most excellent bonus etude. Can you handle it!?



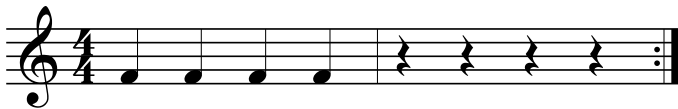
CHAPTER 2: The band will be able to read, count, and play melodies with the pitches concert Eb and F.

2.01 New note!



F

2.02 Quarter notes and quarter rests



2.03 Quarter notes and quarter rests



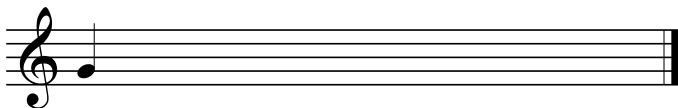
2.04 Quarter notes and quarter rests



2.05 Four note scale

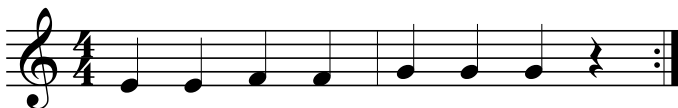


2.06 New note!



G

2.07 Quarter notes and quarter rests



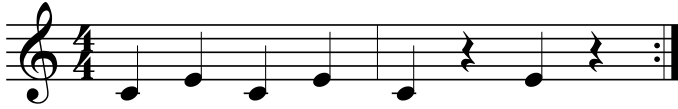
2.08 Quarter notes and quarter rests



2.09 Five note scale



2.10 Thirds



2.11 Thirds



2.12 Thirds



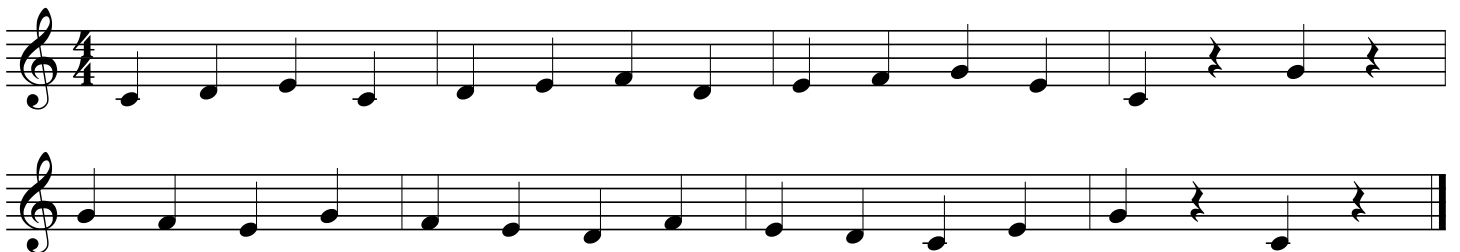
2.13 Flexibility



2.14 Get up and get down



2.15 Super duper extra bonus beast mode star power etude for Narnia and Azeroth



CHAPTER 3: The band will be able to read, count, and play melodies with half notes and half rests.

3.01 Half notes and half rests



3.02 Half notes and half rests



3.03 Half notes and half rests



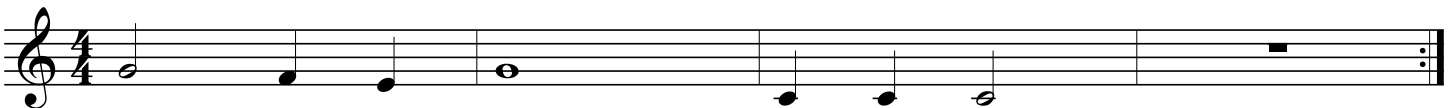
3.04 Half notes and half rests



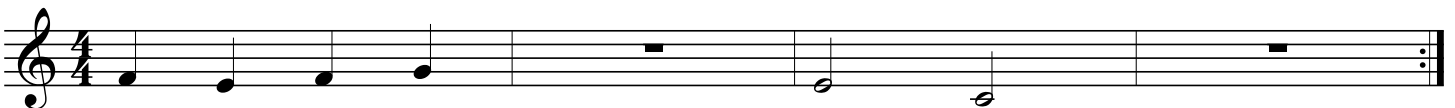
3.05 Whole notes and whole rests



3.06 Whole notes and whole rests



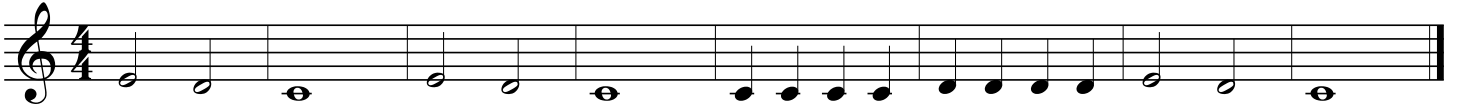
3.07 Whole notes and whole rests



3.08 Whole notes and whole rests



3.09 "Hot Cross Buns"

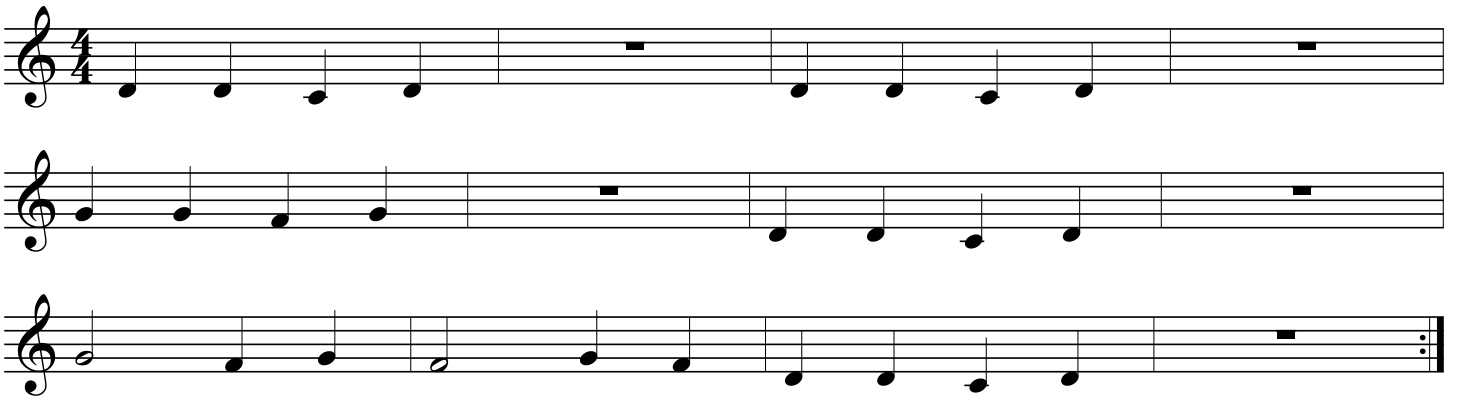


3.10 "Jingle Bells"

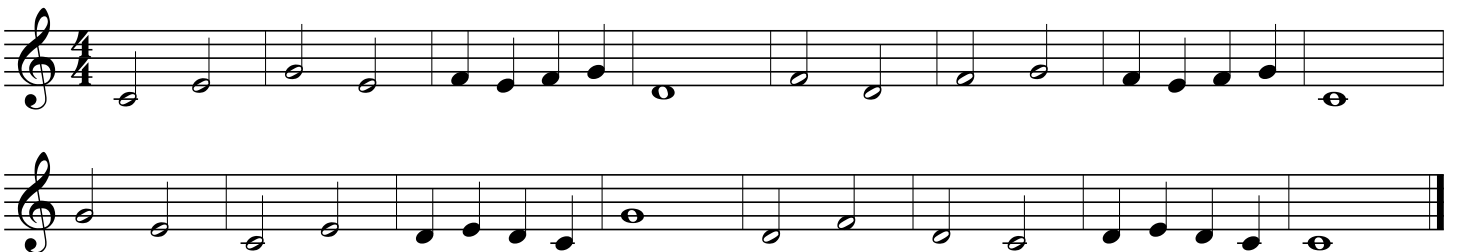
*continue down to
the next line >>>>*



3.11 "Too Much Homework Blues" - Dickson



3.12 "March Of The Stinky Kids" - Dickson



3.13 "Jingle Bells" with first and second endings

Musical notation for "Jingle Bells" in 4/4 time. The first line shows the main melody. The second line shows the first ending, which leads to the second ending. The second ending concludes the piece with a final note.

CHAPTER 4: The band will be able to read, count, and play melodies with the pitch concert G.

4.01 New note!

Musical notation for "New note!" showing a single note on a treble clef staff, labeled with the letter 'A' below it.

4.02 Three note scale

Musical notation for "Three note scale" in 4/4 time, showing a three-note scale on a treble clef staff.

4.03 Help for the brass

Musical notation for "Help for the brass" in 4/4 time, showing a melody on a treble clef staff with a rest for the brass instruments.

4.04 "Twinkle Twinkle Little Star" - W.A. Mozart

Musical notation for "Twinkle Twinkle Little Star" in 4/4 time, showing three staves of the melody on treble clef staves.

4.05 "Repeat Then Move On Blues" - Dickson

Two staves of music in 4/4 time. The first staff contains a melody with quarter notes, eighth notes, and eighth rests. The second staff contains a bass line with quarter notes and half notes.

CHAPTER 5: The band will be able to read, count, and play melodies with eighth notes.

5.01 Eighth notes and eighth rests

Two staves of music in 4/4 time. The first staff shows a sequence of eighth notes and eighth rests. The second staff shows a sequence of eighth notes.

1 + 2 + 3 + 4 + 1 + 2 + 3 + 4 +

5.02 Eighth notes

Two staves of music in 4/4 time. The first staff shows a sequence of eighth notes. The second staff shows a sequence of eighth notes.

1 + 2 + 3 + 4 + 1 2 3

5.03 Eighth notes

Two staves of music in 4/4 time. The first staff shows a sequence of eighth notes. The second staff shows a sequence of eighth notes.

1 + 2 + 3 + 4 + 1 2 3

5.04 Eighth notes

Two staves of music in 4/4 time. The first staff shows a sequence of eighth notes. The second staff shows a sequence of eighth notes.

1 + 2 3 + 4 1 2 3

5.05 Eighth notes

Two staves of music in 4/4 time. The first staff shows a sequence of eighth notes. The second staff shows a sequence of eighth notes.

1 + 2 + 3 4 1 + 2 + 3

5.06 Eighth notes

Two staves of music in 4/4 time. The first staff shows a sequence of eighth notes. The second staff shows a sequence of eighth notes.

1 + 2 + 3 4 1 + 2 + 3

5.07 "Jolly Old St. Nicholas"

Two staves of musical notation for the song "Jolly Old St. Nicholas". The music is in 4/4 time and B-flat major. The melody consists of eighth and quarter notes, with a final dotted half note.

5.08 "This Old Man"

Two staves of musical notation for the song "This Old Man". The music is in 4/4 time and B-flat major. The melody features a mix of quarter and eighth notes, ending with a dotted half note.

5.09 "Cafeteria Food Doesn't Seem Like Actual Food Blues" - Dickson

Two staves of musical notation for the song "Cafeteria Food Doesn't Seem Like Actual Food Blues" by Dickson. The music is in 4/4 time and B-flat major. The melody includes quarter notes, eighth notes, and rests, concluding with a dotted half note.

CHAPTER 6: The band will be able to read, count, and play melodies with the pitch Ab, and dotted-half notes.

6.01 New note!

A single staff of musical notation showing a new note, B-flat, on a treble clef staff. The note is a quarter note.

B \flat

6.02 Three note scale

A single staff of musical notation showing a three-note scale in 4/4 time and B-flat major. The notes are quarter notes: B-flat, C, and D.

6.03 "Yankee Doodle"

Two staves of musical notation in 2/4 time, key of B-flat. The melody consists of eighth notes with slurs over pairs of notes. The first staff ends with a double bar line, and the second staff continues the melody.

6.04 Slurs

One staff of musical notation in 2/4 time, key of B-flat. It features a sequence of eighth notes with a slur under the first two notes and another slur under the next two notes.

6.05 Slurs

One staff of musical notation in 2/4 time, key of B-flat. It features a sequence of eighth notes with a slur under the first two notes and another slur under the next two notes.

6.06 Slurs

One staff of musical notation in 4/4 time, key of B-flat. It features a sequence of eighth notes with a slur under the first four notes and another slur under the next four notes.

6.07 Dotted-half notes

tap your foot with the beat while you play!

One staff of musical notation in 4/4 time, key of B-flat. It features a sequence of dotted half notes, with a final quarter rest and a repeat sign at the end.

6.08 Etude

One staff of musical notation in 4/4 time, key of B-flat. It features a sequence of eighth notes with slurs under groups of notes, ending with a quarter rest and a repeat sign.

6.09 Etude

Two staves of musical notation in 4/4 time. The first staff begins with a treble clef and a key signature of one flat (Bb). The melody consists of quarter and eighth notes, with some notes beamed together. The second staff continues the melody, ending with a double bar line.

6.10 "Jurassic Park"

Two staves of musical notation in 4/4 time. The first staff begins with a treble clef and a key signature of two flats (Bb, Eb). The melody features quarter and eighth notes, with some notes beamed together. The second staff continues the melody, ending with a double bar line.

6.11 "Covid-19 Blues" duet, part 1

Three staves of musical notation in 4/4 time. The first staff begins with a treble clef and a key signature of two flats (Bb, Eb). The melody consists of quarter and eighth notes, with some notes beamed together. The second and third staves continue the melody, ending with a double bar line.

6.11 "Covid-19 Blues" duet, part 2

Three staves of musical notation in 4/4 time. The first staff begins with a treble clef and a key signature of two flats (Bb, Eb). The melody consists of quarter and eighth notes, with some notes beamed together. The second and third staves continue the melody, ending with a double bar line.

CHAPTER 7: The band will be able to read, count, and play melodies in 3/4 meter.

7.01 3/4 meter

Musical notation for exercise 7.01 in 3/4 meter. The melody consists of a sequence of quarter notes on a single staff. The notes are: G4, A4, B4, C5, B4, A4, G4, F4, E4, D4, C4. Below the staff, the notes are numbered 1 through 11, corresponding to the sequence: 1, 2, 3, 1, 2, 3, 1, 2, 3, 1.

7.02 "The Pirates Of The Instrument Storage Room" - Dickson

Musical notation for exercise 7.02 in 3/4 meter. The exercise consists of two staves. The first staff contains a melody of quarter notes: G4, A4, B4, C5, B4, A4, G4, F4, E4, D4, C4. The second staff contains a melody of quarter notes: G4, A4, B4, C5, B4, A4, G4, F4, E4, D4, C4. Both staves end with a double bar line and repeat dots.

7.03 "We Wish You A Merry Christmas"

Musical notation for exercise 7.03 in 3/4 meter. The exercise consists of two staves. The first staff contains a melody of quarter notes: G4, A4, B4, C5, B4, A4, G4, F4, E4, D4, C4. The second staff contains a melody of quarter notes: G4, A4, B4, C5, B4, A4, G4, F4, E4, D4, C4. Both staves end with a double bar line and repeat dots.

7.04 "There's A Hole In The Bucket"

Musical notation for exercise 7.04 in 3/4 meter. The exercise consists of two staves. The first staff contains a melody of quarter notes: G4, A4, B4, C5, B4, A4, G4, F4, E4, D4, C4. The second staff contains a melody of quarter notes: G4, A4, B4, C5, B4, A4, G4, F4, E4, D4, C4. Both staves end with a double bar line and repeat dots.

CHAPTER 8: The band will be able to read, count, and play melodies with the pitch concert A, and rhythms with tied notes.

8.01 New note!

A single staff of music in treble clef. It begins with a quarter note on the line B. This is followed by a quarter rest, then a quarter note on the space C. The piece ends with a double bar line.

8.02 Etude

A single staff of music in treble clef, 4/4 time. The melody consists of quarter notes: C4, D4, E4, F4, G4, A4, B4, C5. A slur covers the notes G4, A4, B4, and C5. The piece ends with a double bar line.

8.03 "Hat Dance"

A single staff of music in treble clef, 3/4 time. The melody consists of quarter notes: C4, D4, E4, F4, G4, A4, B4, C5. A slur covers the notes G4, A4, B4, and C5. The piece ends with a double bar line.

8.03 Ties

Two staves of music in treble clef, 4/4 time. The top staff contains a melody of quarter notes: C4, D4, E4, F4, G4, A4, B4, C5. The bottom staff contains a melody of quarter notes: C4, D4, E4, F4, G4, A4, B4, C5. The piece ends with a double bar line.

8.04 Ties

A single staff of music in treble clef, 4/4 time. The melody consists of quarter notes: C4, D4, E4, F4, G4, A4, B4, C5. The piece ends with a double bar line.

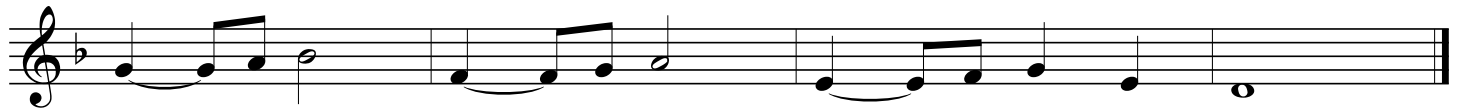
8.05 "Deck The Halls"

A single staff of music in treble clef, 4/4 time. The melody consists of quarter notes: C4, D4, E4, F4, G4, A4, B4, C5. The piece ends with a double bar line.

8.06 "Spooky Song" - Dickson



This _____ song is so spoo - ky, I _____ am so af - raid,



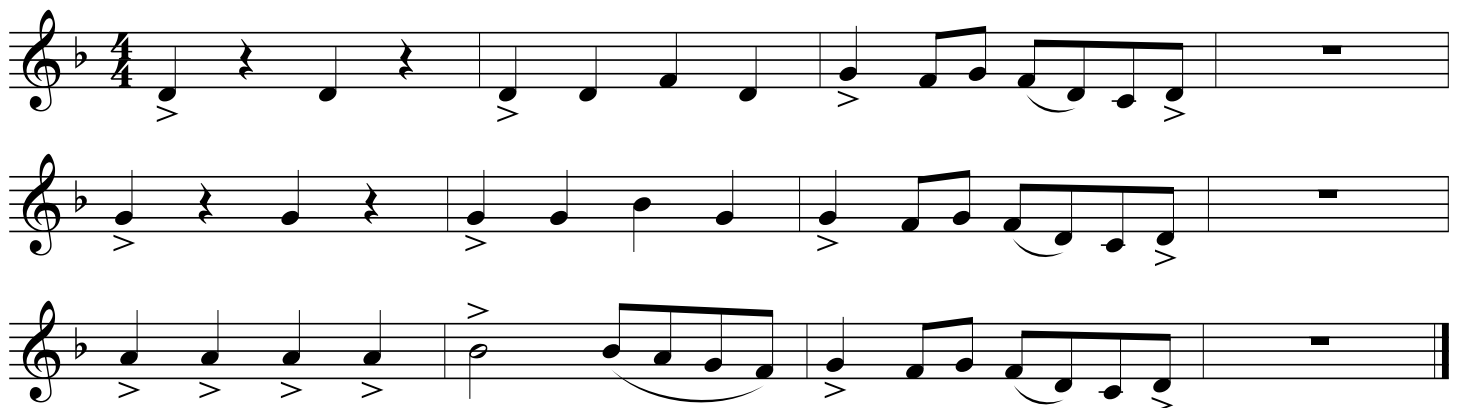
Lots _____ of ties, I _____ think I am _____ too scared to play!

8.07 "Ode To Joy" - Ludwig Van Beethoven



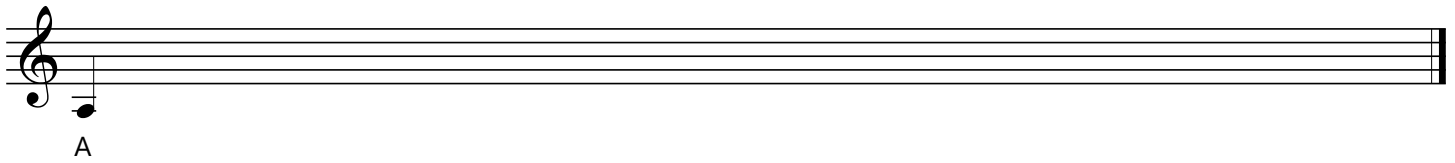
*notes with the Accent mark > should stand out,
so blow a little more air at the beginning of the note.*

8.08 "Accent Blues"



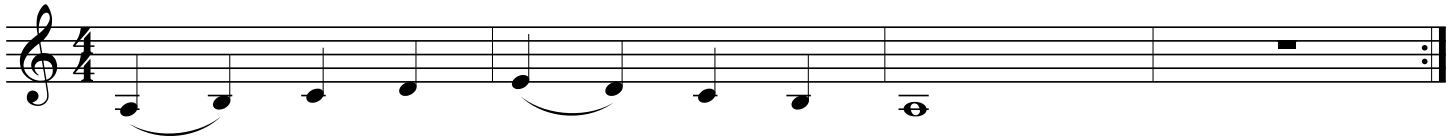
CHAPTER 9: The band will be able to read, count, and play melodies with the pitch concert G, accidentals, and rhythms with ties across the bar line.

9.01 New note!



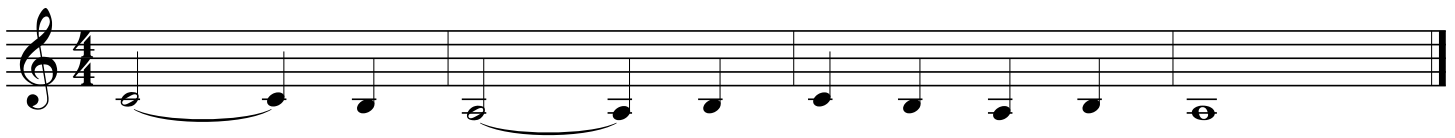
A single treble clef staff with a treble clef and a single quarter note on the line (A).

9.02 Five note scale



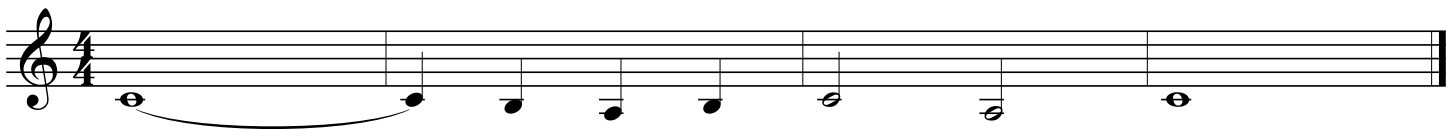
A treble clef staff in 4/4 time with a five-note scale: C4, D4, E4, F4, G4. The notes are connected by a slur.

9.03 Ties



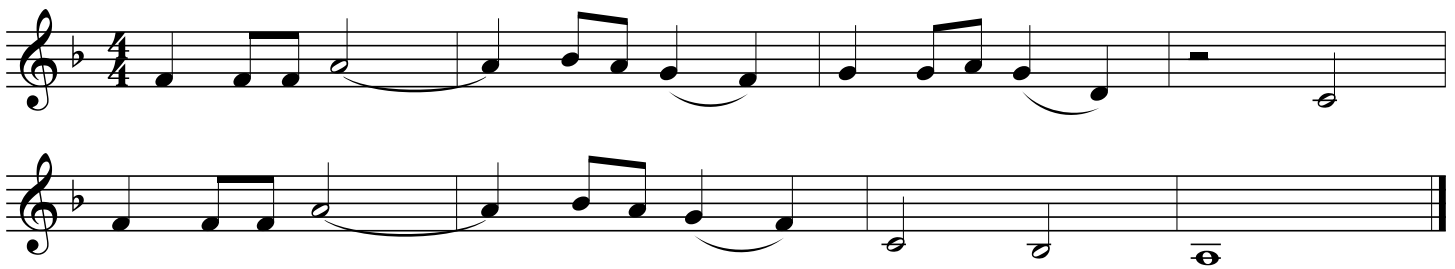
A treble clef staff in 4/4 time with a five-note scale: C4, D4, E4, F4, G4. The notes are connected by a slur, and there are ties between the notes.

9.04 Ties



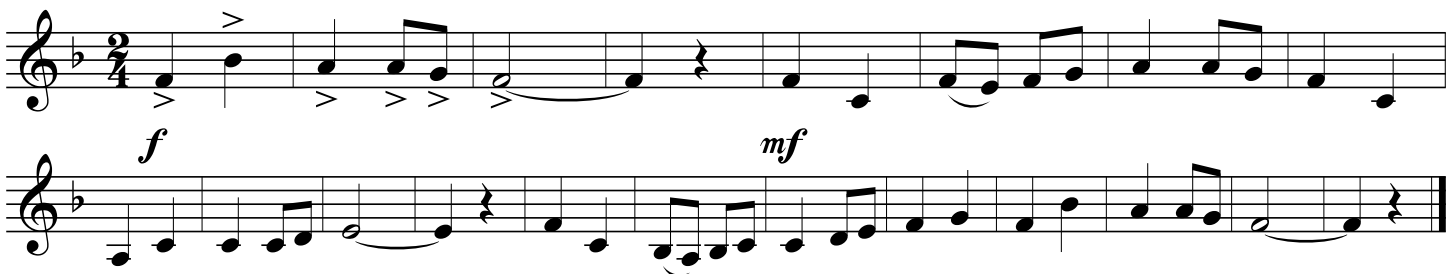
A treble clef staff in 4/4 time with a five-note scale: C4, D4, E4, F4, G4. The notes are connected by a slur, and there are ties between the notes.

9.05 "Like And Subscribe To This Etude" - Dickson



Two treble clef staves in 4/4 time. The top staff has a melody with eighth and quarter notes. The bottom staff has a bass line with quarter and eighth notes.

9.06 "January February March" - Dickson



Two treble clef staves in 2/4 time. The top staff has a melody with eighth and quarter notes, including accents and slurs. The bottom staff has a bass line with quarter and eighth notes. Dynamics markings *f* and *mf* are present.

9.07 "Summertime" - George & Ira Gershwin

Musical score for "Summertime" in 4/4 time, key of B-flat major. The score consists of four staves. The first three staves feature a melody with a mix of eighth and quarter notes, including a prominent descending line. The fourth staff continues the melody with a final cadence.

9.08 "End-Of-Grade Testing Blues" - Dickson

Musical score for "End-Of-Grade Testing Blues" in 4/4 time, key of B-flat major. The score consists of three staves. The melody is characterized by a steady eighth-note pattern with occasional rests, creating a rhythmic, blues-influenced feel.

9.09 "The Medallion Calls" from Pirates Of The Caribbean

Musical score for "The Medallion Calls" in 3/4 time, key of B-flat major. The score consists of four staves. The melody is a continuous eighth-note line with a strong rhythmic drive, typical of the film's score.

9.10 New note



A single staff of music in treble clef with a key signature of one sharp (F#). It contains a single quarter note on the second line of the staff, which is F#.

9.11 Accidentals



Two staves of music in treble clef with a 4/4 time signature. The first staff contains a sequence of notes: C4, D4, E4, F4, G4, A4, B4, C5, D5, E5, F5, G5, A5, B5, C6, D6, E6, F6, G6, A6, B6, C7, D7, E7, F7, G7, A7, B7, C8. The second staff contains a sequence of notes: C4, D4, E4, F4, G4, A4, B4, C5, D5, E5, F5, G5, A5, B5, C6, D6, E6, F6, G6, A6, B6, C7, D7, E7, F7, G7, A7, B7, C8. The notes are connected by a slur, and there are accidentals (sharps and naturals) on several notes.

9.12 "March Of The Flying Eagles" - Dickson



Two staves of music in treble clef with a 4/4 time signature. The first staff contains a sequence of notes: C4, D4, E4, F4, G4, A4, B4, C5, D5, E5, F5, G5, A5, B5, C6, D6, E6, F6, G6, A6, B6, C7, D7, E7, F7, G7, A7, B7, C8. The second staff contains a sequence of notes: C4, D4, E4, F4, G4, A4, B4, C5, D5, E5, F5, G5, A5, B5, C6, D6, E6, F6, G6, A6, B6, C7, D7, E7, F7, G7, A7, B7, C8. The notes are connected by a slur, and there are accidentals (sharps and naturals) on several notes.

9.13 "Sick Licks" - Dickson



Three staves of music in treble clef with a 4/4 time signature and a key signature of one flat (Bb). The first staff contains a sequence of notes: Bb3, C4, D4, E4, F4, G4, A4, Bb4, C5, D5, E5, F5, G5, A5, Bb5, C6, D6, E6, F6, G6, A6, Bb6, C7, D7, E7, F7, G7, A7, Bb7, C8. The second staff contains a sequence of notes: Bb3, C4, D4, E4, F4, G4, A4, Bb4, C5, D5, E5, F5, G5, A5, Bb5, C6, D6, E6, F6, G6, A6, Bb6, C7, D7, E7, F7, G7, A7, Bb7, C8. The third staff contains a sequence of notes: Bb3, C4, D4, E4, F4, G4, A4, Bb4, C5, D5, E5, F5, G5, A5, Bb5, C6, D6, E6, F6, G6, A6, Bb6, C7, D7, E7, F7, G7, A7, Bb7, C8. The notes are connected by a slur, and there are accidentals (sharps and naturals) on several notes.

During the 2020 pandemic, I wrote many new songs for my 6th grade students to learn at home. I added the best of them to Chapter 9, which is why this chapter is so long. Many of these songs have play-along recordings on my website. Some of these songs are redundant, in terms of the band curriculum, but they were good, fun to play, and I worked hard on them, so I wanted to include them in my Method anyway. Dig it.

9.14 "Linus And Lucy"

you can use this to play along with the recording of
"Linus And Lucy" by Ellis and Wynton Marsalis on Youtube

Musical score for "Linus And Lucy" in G major (one sharp) and 4/4 time. The score consists of five staves. The first two staves show the main melody. The third staff includes a first ending (marked '1.') and a second ending (marked '2.'). The fourth staff features a rhythmic accompaniment with eighth-note patterns and accents (>). The fifth staff continues the accompaniment with dotted rhythms and accents.

9.15 March

Musical score for "March" in B-flat major (two flats) and 4/4 time. The score consists of four staves. The first two staves show the main melody with accents (>) under the notes. The third staff features a rhythmic accompaniment with eighth-note patterns and accents. The fourth staff continues the accompaniment with dotted rhythms and accents.

9.16 "My Locker Won't Open" - Dickson

Musical score for "My Locker Won't Open" by Dickson. The piece is in 4/4 time and B-flat major. It consists of three staves. The first two staves contain a melodic line with eighth and quarter notes, and the third staff contains a bass line with quarter and eighth notes. The music concludes with a double bar line.

9.17 "My Favorite Things"

Musical score for "My Favorite Things". The piece is in 3/4 time and B-flat major. It consists of seven staves. The first six staves contain a melodic line with eighth and quarter notes, and the seventh staff contains a bass line with quarter notes. The music concludes with a double bar line.

9.18 "Springtime Under Quarentine" - Dickson



Fine



D.C. al Fine

