

# MR. DICKSON'S METHOD FOR BAND

## Book One

Flute

www.JustinDickson.com

revised July 13, 2020

--- While You Are Playing ---

Tap your foot with the beat, during all notes and rests.

Count 1-2-3-4-1-2-3-4 in your mind while you play each measure (notes and rests).

Breathe on the beat before you start playing. Breathe together to play together.

Look ahead and get ready for the next measure when you can.

Sit up straight, take a big and relaxed breath every time, don't tense up.

--- Practice ---

Practice your instrument every day. Really. Every day.

Every day you practice, you will get stronger and better;

every day you don't practice, you will get weaker and worse.

It's not about how hard you try; it's about how often you try.

If you want to get good at something, you have to do it over and over and over again slowly.

If you make a mistake, stop and fix it. Do not just keep going, or it will not get better.

Practice with a metronome, to help you count and keep a steady beat.

Practice with the Bandmate Chromatic Tuner app to check your notes.

--- Strategies For Learning New Music ---

Slowwwwwww Dooooowwwwwnnnnnnn.

Slow down the tempo until you can play it without any mistakes, then play it correctly at that tempo 5-10 times before trying to speed up. Slow down again if you make mistakes.

Say the letter names of the notes out loud.

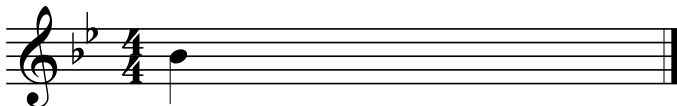
Say the rhythms out loud ("quarter quarter eighth eighth" etc.)

Tizzle, count, and/or clap the rhythm before you try to play the melody.

If you are having trouble playing the right notes, play through the melody holding each note for 3 seconds.

**CHAPTER 1: The band will be able to read, count, and play melodies with the pitches concert B $\flat$ , C, and D; and rhythms with quarter notes and quarter rests.**

1.01 Your first note



B $\flat$

1.02 Quarter notes and quarter rests

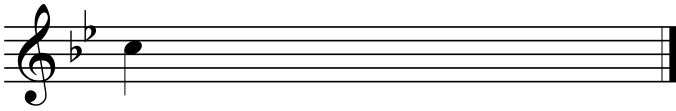


1 2 3 4 1 2 3 4

1.03 Quarter notes and quarter rests



1.04 Your next note



C

1.05 Quarter notes and quarter rests



1.06 Quarter notes and quarter rests



1.07 Quarter notes and quarter rests



1.08 Quarter notes and quarter rests



1.09 Your third note



D

1.10 Quarter notes and quarter rests



1.11 Quarter notes and quarter rests



1.12 Quarter notes and quarter rests



1.13 Quarter notes and quarter rests



1.14 Quarter notes and quarter rests



1.15 Three note scale



1.16 "Mary Had A Little Lamb"



*continue down to  
the next line >>>>*

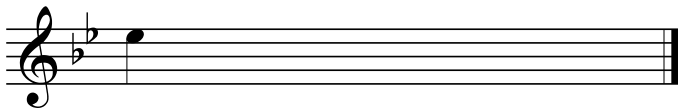


1.17 Most excellent bonus etude. Can you handle it!?



**CHAPTER 2: The band will be able to read, count, and play melodies with the pitches concert Eb and F.**

2.01 New note!



E $\flat$

2.02 Quarter notes and quarter rests



2.03 Quarter notes and quarter rests



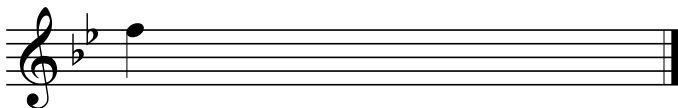
2.04 Quarter notes and quarter rests



2.05 Four note scale



2.06 New note!



F

2.07 Quarter notes and quarter rests



2.08 Quarter notes and quarter rests



2.09 Five note scale



2.10 Thirds



2.11 Thirds



2.12 Thirds



2.13 Flexibility



2.14 Get up and get down

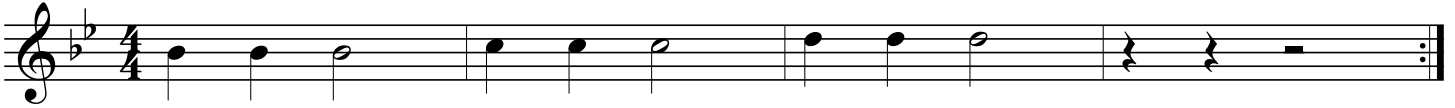


2.15 Super duper extra bonus beast mode star power etude for Narnia and Azeroth



**CHAPTER 3: The band will be able to read, count, and play melodies with half notes and half rests.**

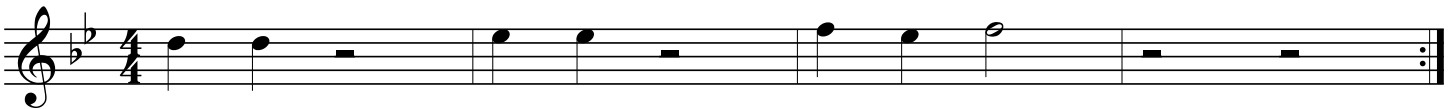
3.01 Half notes and half rests



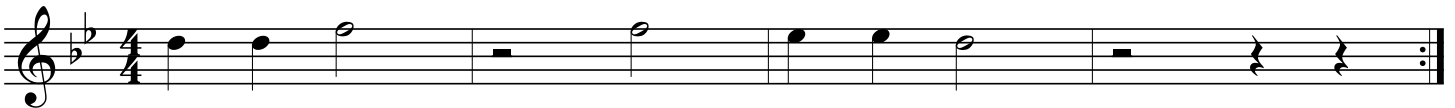
3.02 Half notes and half rests



3.03 Half notes and half rests



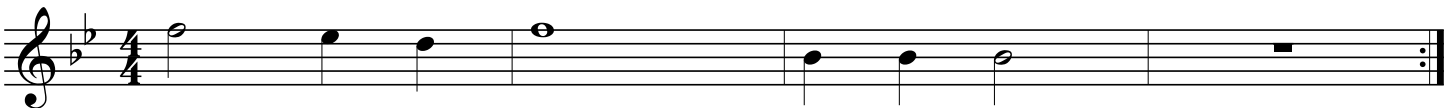
3.04 Half notes and half rests



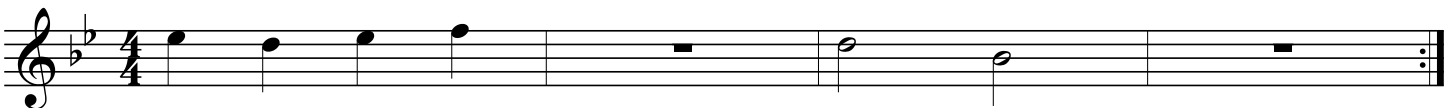
3.05 Whole notes and whole rests



3.06 Whole notes and whole rests



3.07 Whole notes and whole rests



3.08 Whole notes and whole rests



3.09 "Hot Cross Buns"

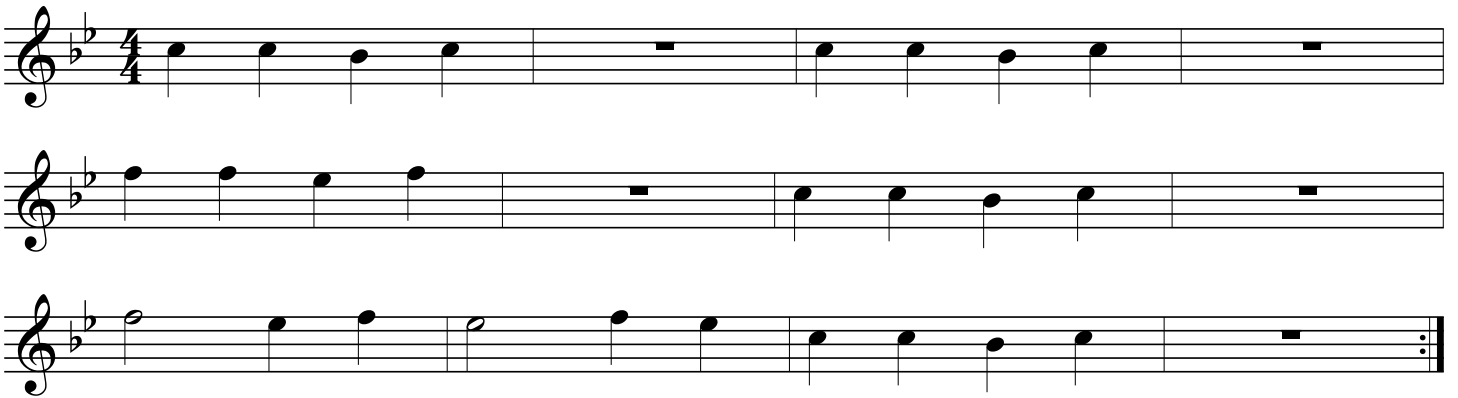


3.10 "Jingle Bells"

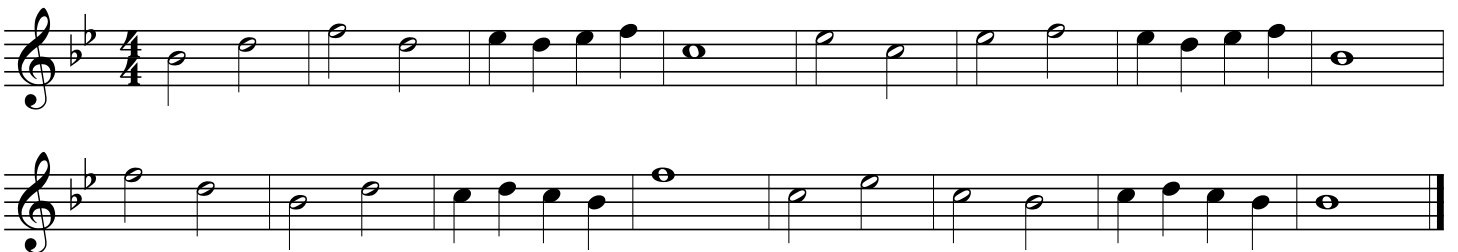
*continue down to  
the next line >>>>*



3.11 "Too Much Homework Blues" - Dickson



3.12 "March Of The Stinky Kids" - Dickson



3.13 "Jingle Bells" with first and second endings

Musical notation for "Jingle Bells" in G major, 4/4 time. The first line shows the main melody. The second line shows the first ending, which leads to the second ending. The second ending concludes the piece.

**CHAPTER 4: The band will be able to read, count, and play melodies with the pitch concert G.**

4.01 New note!

Musical notation for "New note!" showing a single note G on a treble clef staff in G major.

G

4.02 Three note scale

Musical notation for "Three note scale" showing a three-note scale (G-A-B) on a treble clef staff in G major.

4.03 Help for the brass

Musical notation for "Help for the brass" showing a melody for brass instruments on a treble clef staff in G major.

4.04 "Twinkle Twinkle Little Star" - W.A. Mozart

Musical notation for "Twinkle Twinkle Little Star" by W.A. Mozart, showing three staves of the melody in G major, 4/4 time.



4.05 "Repeat Then Move On Blues" - Dickson

Musical notation for "Repeat Then Move On Blues" - Dickson. The piece is in 4/4 time and has a key signature of two flats. The first staff shows a melody with quarter notes, eighth notes, and rests. The second staff shows a bass line with quarter notes and a whole note.

**CHAPTER 5: The band will be able to read, count, and play melodies with eighth notes.**

5.01 Eighth notes and eighth rests

Musical notation for 5.01 Eighth notes and eighth rests. The piece is in 4/4 time and has a key signature of two flats. The first half of the staff contains eight eighth notes, and the second half contains eight eighth rests.

1 + 2 + 3 + 4 + 1 + 2 + 3 + 4 +

5.02 Eighth notes

Musical notation for 5.02 Eighth notes. The piece is in 4/4 time and has a key signature of two flats. The first half of the staff contains four eighth notes, and the second half contains three eighth notes.

1 + 2 + 3 + 4 + 1 2 3

5.03 Eighth notes

Musical notation for 5.03 Eighth notes. The piece is in 4/4 time and has a key signature of two flats. The first half of the staff contains four eighth notes, and the second half contains three eighth notes.

1 + 2 + 3 + 4 + 1 2 3

5.04 Eighth notes

Musical notation for 5.04 Eighth notes. The piece is in 4/4 time and has a key signature of two flats. The first half of the staff contains four eighth notes, and the second half contains three eighth notes.

1 + 2 3 + 4 1 2 3

5.05 Eighth notes

Musical notation for 5.05 Eighth notes. The piece is in 4/4 time and has a key signature of two flats. The first half of the staff contains four eighth notes, and the second half contains three eighth notes.

1 + 2 + 3 4 1 + 2 + 3

5.06 Eighth notes

Musical notation for 5.06 Eighth notes. The piece is in 4/4 time and has a key signature of two flats. The first half of the staff contains four eighth notes, and the second half contains three eighth notes.

1 + 2 + 3 4 1 + 2 + 3

5.07 "Jolly Old St. Nicholas"

Two staves of musical notation for the piece "Jolly Old St. Nicholas". The music is in 4/4 time and B-flat major. The melody consists of eighth and quarter notes, with a final dotted half note.

5.08 "This Old Man"

Two staves of musical notation for the piece "This Old Man". The music is in 4/4 time and B-flat major. The melody features a mix of quarter and eighth notes, ending with a dotted half note.

5.09 "Cafeteria Food Doesn't Seem Like Actual Food Blues" - Dickson

Two staves of musical notation for the piece "Cafeteria Food Doesn't Seem Like Actual Food Blues" by Dickson. The music is in 4/4 time and B-flat major. The melody includes quarter notes, eighth notes, and rests, concluding with a dotted half note.

**CHAPTER 6: The band will be able to read, count, and play melodies with the pitch Ab, and dotted-half notes.**

6.01 New note!

A single staff of musical notation showing a new note, Ab, in B-flat major. The note is a quarter note on the second line of the staff.

Ab

6.02 Three note scale

A single staff of musical notation showing a three-note scale in B-flat major. The notes are Ab, A, and Bb, each a quarter note, followed by a dotted half note.

6.03 "Yankee Doodle"

Musical notation for "Yankee Doodle" in 2/4 time. The melody consists of eighth notes and quarter notes, with a key signature of two flats (B-flat and E-flat).

6.04 Slurs

Musical notation for exercise 6.04, focusing on slurs over eighth notes. The key signature is two flats and the time signature is 2/4.

6.05 Slurs

Musical notation for exercise 6.05, focusing on slurs over quarter notes. The key signature is two flats and the time signature is 2/4.

6.06 Slurs

Musical notation for exercise 6.06, focusing on slurs over half notes. The key signature is two flats and the time signature is 4/4.

6.07 Dotted-half notes

*tap your foot with the beat while you play!*

Musical notation for exercise 6.07, featuring dotted half notes. The key signature is two flats and the time signature is 4/4.

6.08 Etude

Musical notation for exercise 6.08, an etude with slurs and eighth notes. The key signature is two flats and the time signature is 4/4.

6.09 Etude

Two staves of musical notation for Etude 6.09. The music is in 4/4 time and B-flat major. The first staff begins with a half note B-flat, followed by quarter notes G, A, B-flat, C, D, E, F, G, A, B-flat, C, D, E, F, G, A, B-flat. The second staff continues with a half note B-flat, followed by quarter notes G, A, B-flat, C, D, E, F, G, A, B-flat, C, D, E, F, G, A, B-flat.

6.10 "Jurassic Park"

Two staves of musical notation for "Jurassic Park" 6.10. The music is in 4/4 time and B-flat major. The first staff begins with a half note B-flat, followed by quarter notes G, A, B-flat, C, D, E, F, G, A, B-flat, C, D, E, F, G, A, B-flat. The second staff continues with a half note B-flat, followed by quarter notes G, A, B-flat, C, D, E, F, G, A, B-flat, C, D, E, F, G, A, B-flat.

6.11 "Covid-19 Blues" duet, part 1

Three staves of musical notation for "Covid-19 Blues" duet, part 1. The music is in 4/4 time and B-flat major. The first staff begins with a half note B-flat, followed by quarter notes G, A, B-flat, C, D, E, F, G, A, B-flat, C, D, E, F, G, A, B-flat. The second staff continues with a half note B-flat, followed by quarter notes G, A, B-flat, C, D, E, F, G, A, B-flat, C, D, E, F, G, A, B-flat. The third staff continues with a half note B-flat, followed by quarter notes G, A, B-flat, C, D, E, F, G, A, B-flat, C, D, E, F, G, A, B-flat.

6.11 "Covid-19 Blues" duet, part 2

Three staves of musical notation for "Covid-19 Blues" duet, part 2. The music is in 4/4 time and B-flat major. The first staff begins with a half note B-flat, followed by quarter notes G, A, B-flat, C, D, E, F, G, A, B-flat, C, D, E, F, G, A, B-flat. The second staff continues with a half note B-flat, followed by quarter notes G, A, B-flat, C, D, E, F, G, A, B-flat, C, D, E, F, G, A, B-flat. The third staff continues with a half note B-flat, followed by quarter notes G, A, B-flat, C, D, E, F, G, A, B-flat, C, D, E, F, G, A, B-flat.



**CHAPTER 8: The band will be able to read, count, and play melodies with the pitch concert A, and rhythms with tied notes.**

8.01 New note!

A single staff of music in G major (one sharp) and 4/4 time. It begins with a quarter note G4, followed by a quarter rest, a quarter note G4, and a quarter rest. The letter 'A' is written below the first G note.

8.02 Etude

A single staff of music in G major (one sharp) and 4/4 time. The melody consists of: quarter note G4, quarter note A4, quarter note B4, quarter note C5, quarter rest, quarter note B4, eighth note A4, eighth note G4, quarter note F4, quarter note E4, quarter note D4, quarter note C4.

8.03 "Hat Dance"

A single staff of music in G major (one sharp) and 3/4 time. The melody consists of: quarter note G4, quarter note A4, quarter note B4, quarter note C5, quarter note B4, quarter note A4, quarter note G4, quarter rest, quarter note G4, quarter note A4, quarter note B4, quarter note C5, quarter note B4, quarter note A4, quarter note G4, quarter note F4, quarter note E4, quarter note D4, quarter note C4. The piece ends with a repeat sign and two endings. The first ending is a quarter note G4, quarter note A4, quarter note B4, quarter note C5. The second ending is a quarter note G4, quarter note A4, quarter note B4, quarter note C5.

8.03 Ties

Two staves of music in G major (one sharp) and 4/4 time. The first staff contains: quarter note G4, quarter note A4, quarter note B4, quarter note C5, quarter note B4, quarter note A4, quarter note G4, quarter note F4, quarter note E4, quarter note D4, quarter note C4. The second staff contains: quarter note G4, quarter note A4, quarter note B4, quarter note C5, quarter note B4, quarter note A4, quarter note G4, quarter note F4, quarter note E4, quarter note D4, quarter note C4. Ties connect the notes between the two staves.

8.04 Ties

A single staff of music in G major (one sharp) and 4/4 time. The melody consists of: quarter note G4, quarter note A4, quarter note B4, quarter note C5, quarter note B4, quarter note A4, quarter note G4, quarter note F4, quarter note E4, quarter note D4, quarter note C4. Ties connect the notes between the two staves.

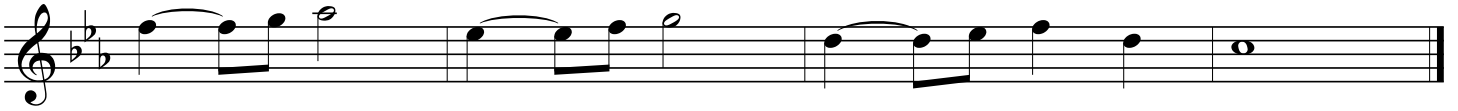
8.05 "Deck The Halls"

A single staff of music in G major (one sharp) and 4/4 time. The melody consists of: quarter note G4, quarter note A4, quarter note B4, quarter note C5, quarter note B4, quarter note A4, quarter note G4, quarter note F4, quarter note E4, quarter note D4, quarter note C4.

8.06 "Spooky Song" - Dickson



This \_\_\_\_\_ song is so spoo - ky, I \_\_\_\_\_ am so af - raid,



Lots \_\_\_\_\_ of ties, I \_\_\_\_\_ think I am \_\_\_\_\_ too scared to play!

8.07 "Ode To Joy" - Ludwig Van Beethoven



*notes with the Accent mark > should stand out,  
so blow a little more air at the beginning of the note.*

8.08 "Accent Blues"



**CHAPTER 9: The band will be able to read, count, and play melodies with the pitch concert G, accidentals, and rhythms with ties across the bar line.**

9.01 New note!

G

9.02 Five note scale

9.03 Ties

9.04 Ties

9.05 "Like And Subscribe To This Etude" - Dickson

9.06 "January February March" - Dickson



9.07 "Summertime" - George & Ira Gershwin

Musical score for "Summertime" in 4/4 time, key of F major. The score consists of four staves. The first three staves feature a melodic line with a long, sweeping phrase that spans across the first two staves. The fourth staff continues the melody with a final phrase and ends with a double bar line.

9.08 "End-Of-Grade Testing Blues" - Dickson

Musical score for "End-Of-Grade Testing Blues" in 4/4 time, key of F major. The score consists of three staves. The melody is characterized by a repetitive rhythmic pattern of eighth and quarter notes, with a bluesy feel. The piece concludes with a double bar line.

9.09 "The Medallion Calls" from Pirates Of The Caribbean

Musical score for "The Medallion Calls" in 3/4 time, key of F major. The score consists of four staves. The melody is a rhythmic, repetitive sequence of eighth and quarter notes, typical of a film score. The piece ends with a double bar line.



9.14 "Linus And Lucy"

you can use this to play along with the recording of  
"Linus And Lucy" by Ellis and Wynton Marsalis on Youtube

Musical score for "Linus And Lucy" in 4/4 time. The score consists of five staves. The first two staves show the melody with a key signature of one flat (Bb) and a common time signature of 4/4. The third staff contains two endings: the first ending leads back to the beginning, and the second ending concludes the piece. The fourth and fifth staves provide the accompaniment, featuring rhythmic patterns and dynamics such as accents (>) and slurs.

9.15 March

Musical score for "March" in 4/4 time. The score consists of four staves. The key signature is two flats (Bb, Eb) and the time signature is 4/4. The first two staves show the melody with various accents (>) and slurs. The third and fourth staves provide the accompaniment, featuring rhythmic patterns and dynamics such as accents (>) and slurs.

9.16 "My Locker Won't Open" - Dickson

Musical score for "My Locker Won't Open" by Dickson. The score consists of three staves of music in 4/4 time, with a key signature of two flats (B-flat and E-flat). The melody is written in the treble clef. The first two staves are identical, and the third staff concludes the piece with a double bar line.

9.17 "My Favorite Things"

Musical score for "My Favorite Things". The score consists of seven staves of music in 3/4 time, with a key signature of two flats (B-flat and E-flat). The melody is written in the treble clef. The first six staves contain the main melody, and the seventh staff features a long, sustained note with a fermata, indicating the end of the piece.

9.18 "Springtime Under Quarentine" - Dickson



**Fine**



**D.C. al Fine**

