

MR. DICKSON'S METHOD FOR BAND

Book Two

Flute

www.JustinDickson.com/Band
revised July 13, 2020

"Strategies That Work When Learning New Music"

Read before you play

- Before you play, read through the music and say the letter names of the notes out loud.
- Before you play, tizzle the rhythms. Tap your foot while you do it, to keep a steady beat.

Set up for a good first note

- Finger the first note before you start to play the song, before you breathe.
- Breathe on the beat before you start. Breathe together to play together.

While you are playing

- Tap your foot gently with the beat while you play, and count your rests.
- Look ahead while you play, so you are ready for the next thing you have to play.

Use technology to help you learn

- When practicing at home, use a tuner app like Bandmate Chromatic Tuner (free version) to check if you are playing the right notes.
- When practicing at home, use a metronome app like Tempo by Frozen Ape (free version) to make sure you are keeping a steady beat.

When you get stuck on a hard part

- First of all, it's not hard, it's just new. Keep trying, you'll get better.
- Find the notes that are difficult for you, and just play them over and over. Break it down to just 2 or 3 notes at a time, and play them as much as you can. Don't try to play the whole song yet if you really just need to work on a few tricky notes in the middle.
- Slowwwwwww downnnnnnnnn. Play it really, really, really slowly. Speed will come later.
- Say the letter names of the notes out loud. Don't just think it, you have to say it out loud or it does not help.
- Tizzle the rhythms, or say the rhythms using a "dah" syllable.
- It's not about trying hard enough, it's about trying often enough. Don't try it 2 or 3 times and then give up. Your body needs more reps to learn new things. Try it 10-15 times, then move on to something else and come back to it later.
- Ask for help! Your teacher gets paid the big bucks to help you. Use them!

CHAPTER 10: The band will review notes and rhythms from Chapters 1-9, and strengthen their embouchure by playing melodies in a higher key. Clarinets will learn the note "low F" and be able to play melodies in their lower chalumeau register.

10.01 "Back To School Blues"

Musical notation for "Back To School Blues" in 4/4 time, key of B-flat major. The melody consists of four measures. The first measure contains a quarter note G4, a quarter note A4, a quarter note B4, and a half note C5. The second measure contains a quarter note B4, a quarter note A4, a quarter note G4, and a half note F4. The third measure contains a quarter note E4, a quarter note D4, a quarter note C4, and a half note B3. The fourth measure contains a quarter note A3, a quarter note G3, a quarter note F3, and a half note E3. The piece concludes with a repeat sign.

10.02 New note for clarinets only

Musical notation for "New note for clarinets only" in 4/4 time, key of B-flat major. The melody consists of a single measure containing a quarter note G4.

10.03 Clarinet pinky power!

Musical notation for "Clarinet pinky power!" in 4/4 time, key of B-flat major. The melody consists of four measures. The first measure contains a quarter note G4, a quarter note A4, a quarter note B4, and a half note C5. The second measure contains a quarter note B4, a quarter note A4, a quarter note G4, and a half note F4. The third measure contains a quarter note E4, a quarter note D4, a quarter note C4, and a half note B3. The fourth measure contains a quarter note A3, a quarter note G3, a quarter note F3, and a half note E3. The piece concludes with a repeat sign.

10.04 Five note scale

Musical notation for "Five note scale" in 4/4 time, key of B-flat major. The melody consists of four measures. The first measure contains a quarter note G4, a quarter note A4, a quarter note B4, and a half note C5. The second measure contains a quarter note B4, a quarter note A4, a quarter note G4, and a half note F4. The third measure contains a quarter note E4, a quarter note D4, a quarter note C4, and a half note B3. The fourth measure contains a quarter note A3, a quarter note G3, a quarter note F3, and a half note E3. The piece concludes with a repeat sign.

10.05 "Jingle Bells"

Musical notation for "Jingle Bells" in 4/4 time, key of B-flat major. The melody consists of four measures. The first measure contains a quarter note G4, a quarter note A4, a quarter note B4, and a quarter note C5. The second measure contains a quarter note B4, a quarter note A4, a quarter note G4, and a quarter note F4. The third measure contains a quarter note E4, a quarter note D4, a quarter note C4, and a quarter note B3. The fourth measure contains a quarter note A3, a quarter note G3, a quarter note F3, and a quarter note E3. The piece concludes with a repeat sign.

10.06 "Four Note Blues" -Dickson

Musical notation for "Four Note Blues" - Dickson. The piece is in 4/4 time and B-flat major. It consists of three staves of music. The first two staves contain the main melody, and the third staff contains a variation with rests in the first two measures.

10.07 "Happy Birthday"

Musical notation for "Happy Birthday". The piece is in 3/4 time and B-flat major. It consists of two staves of music. The first staff contains the first two measures, and the second staff contains the remaining three measures.

10.08 "Banana Boat Song"

Musical notation for "Banana Boat Song". The piece is in 4/4 time and B-flat major. It consists of two staves of music. The first staff contains the first two measures, and the second staff contains the remaining three measures. The word *Fine* is written above the first staff, and *D.C. al Fine* is written below the second staff.

10.09 "Fun Times" - Dickson

Musical notation for "Fun Times" - Dickson, consisting of three staves of music in 4/4 time with a key signature of two flats. The melody features eighth and quarter notes with various phrasing slurs.

CHAPTER 11: The band will be able to identify dynamic markings on sheet music, and will be able to play melodies with dynamic contrast.

11.01 Dynamics

Musical notation for Dynamics exercise, showing four measures of whole notes with dynamic markings *p*, *mp*, *mf*, and *f*.

11.02 Crescendo

Musical notation for Crescendo exercise, showing four measures of whole notes with dynamic markings *p*, *mp*, *mf*, and *f*, connected by crescendo hairpins.

11.03 Decrescendo

Musical notation for Decrescendo exercise, showing four measures of whole notes with dynamic markings *f*, *mf*, *mp*, and *p*, connected by decrescendo hairpins.

11.04 Etude

Musical notation for Etude exercise, showing a melody with dynamic markings *mp*, *f*, and *mp*, connected by hairpins.

CHAPTER 12: The band will be able to count and play melodies with dotted-quarter notes.

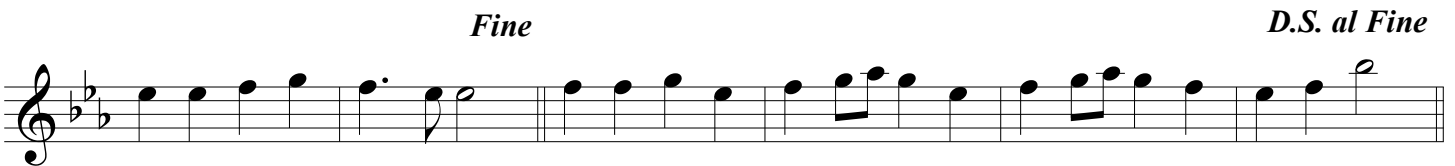
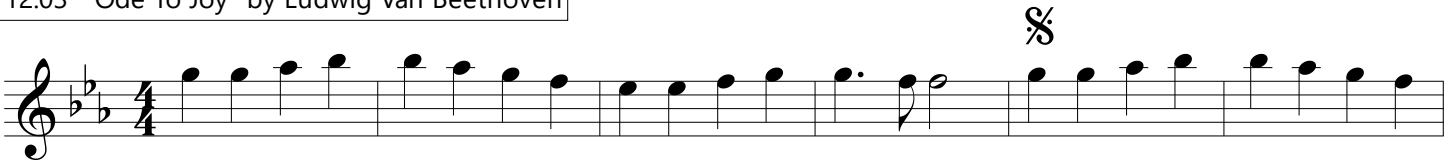
12.01 Dotted-quarter notes



12.02 Etude



12.03 "Ode To Joy" by Ludwig Van Beethoven



12.04 "Deck The Halls"



12.05 "U.S. Marine Corps Hymn"

Musical notation for the first system, consisting of four staves. The key signature is two flats (B-flat and E-flat) and the time signature is 4/4. The melody begins with a whole rest, followed by a quarter note G4, a quarter note A4, and a quarter note B4. The second staff continues with a quarter note C5, a quarter note D5, and a quarter note E5. The third staff continues with a quarter note F5, a quarter note G5, and a quarter note A5. The fourth staff concludes with a quarter note B5, a quarter note C6, and a quarter note D6.

12.06 "Dotted-Quarter Blues" (swing) - Dickson

Musical notation for the second system, consisting of three staves. The key signature is two flats (B-flat and E-flat) and the time signature is 4/4. The melody starts with a dotted quarter note G4, followed by an eighth rest, a quarter note A4, and a quarter note B4. The second staff continues with a dotted quarter note C5, followed by an eighth rest, a quarter note D5, and a quarter note E5. The third staff continues with a dotted quarter note F5, followed by an eighth rest, a quarter note G5, and a quarter note A5. The fourth staff concludes with a dotted quarter note B5, followed by an eighth rest, a quarter note C6, and a quarter note D6.

F#

CHAPTER 13: The band will be able to read and play melodies using the new note "concert C".

13.01 New note!

A single treble clef staff in B-flat major (one flat) showing a single quarter note on the second line, labeled 'C' below it.

13.02 Going up

A single treble clef staff in B-flat major showing a sequence of five quarter notes ascending: B-flat, C, D, E, and F. The final note F is a half note.

13.03 Five-note scale

A single treble clef staff in B-flat major with a 4/4 time signature. It shows a five-note scale: B-flat, C, D, E, and F, each as a quarter note, followed by a half note F.

13.04 "Jingle Bells"

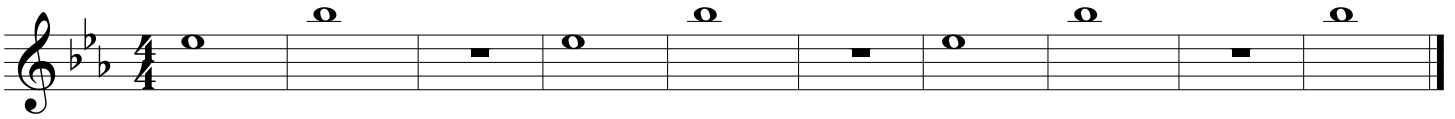
Two staves of musical notation for "Jingle Bells" in B-flat major and 4/4 time. The first staff contains the first four measures, and the second staff contains the next four measures. The melody consists of eighth and sixteenth notes.

13.05 "This Old Man"

Two staves of musical notation for "This Old Man" in B-flat major. The first staff contains the first four measures, and the second staff contains the next four measures. The melody consists of quarter and eighth notes.

CHAPTER 14: The band will be able to read and play melodies using the new note "concert D". Clarinets will be able to read and play melodies using the notes of their clarion (upper) register.

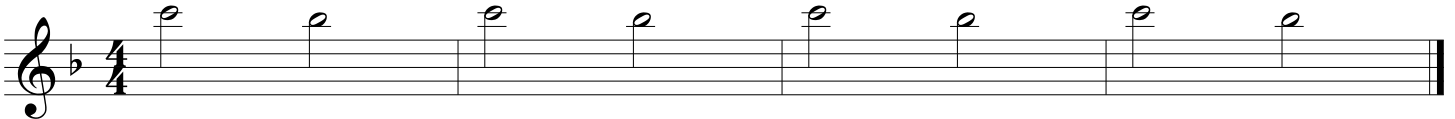
14.01 Clarinet high C



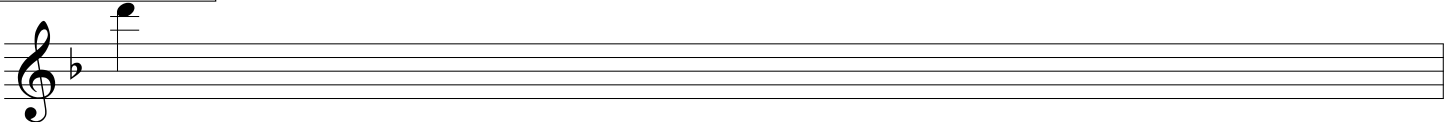
14.02 Clarinet high D



14.03 Clarinet pinky power

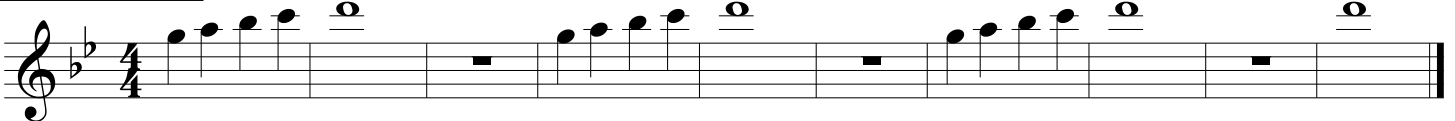


14.04 New note!



D

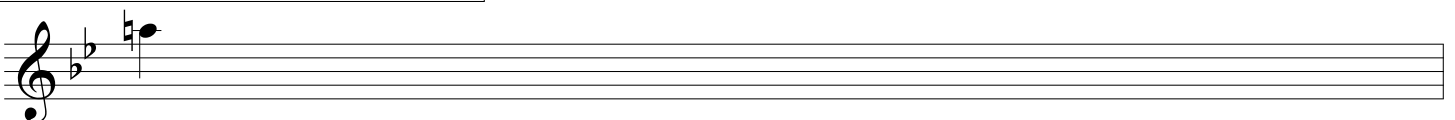
14.05 Going up



14.06 "Mary Had A Little Lamb"

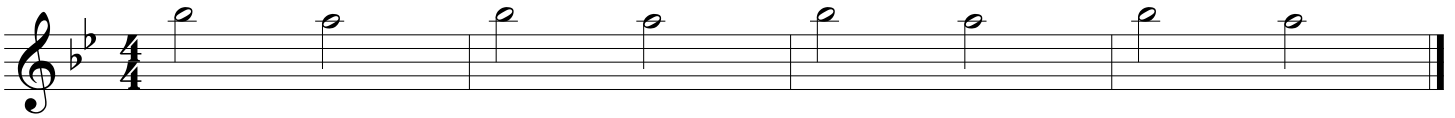


14.07 One more new note for clarinets

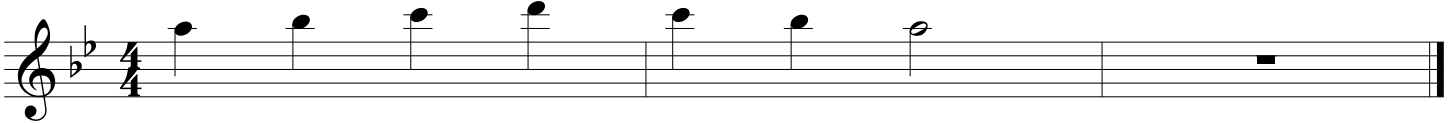


A

14.08 Other pinky power!

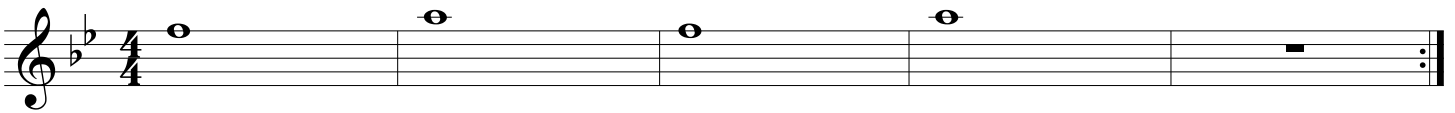


14.09 Four-note scale

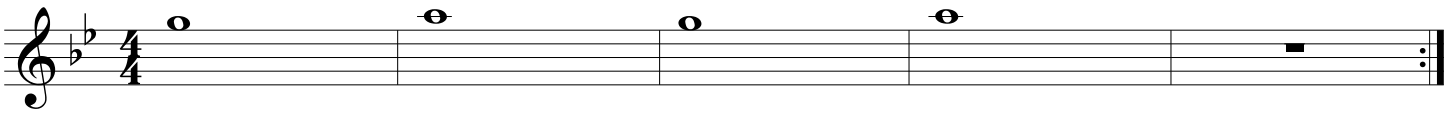


A B \flat C D C B \flat A

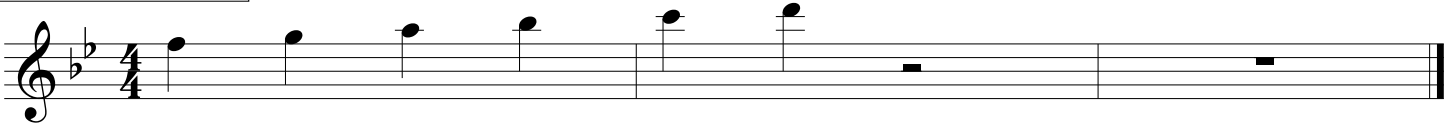
14.10 Crossing the break



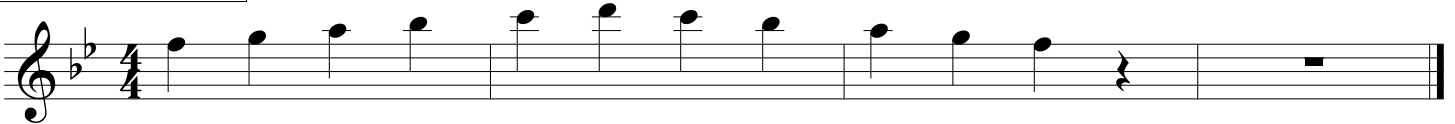
14.11 Crossing the break



14.12 Take it slowly



14.13 You can do it



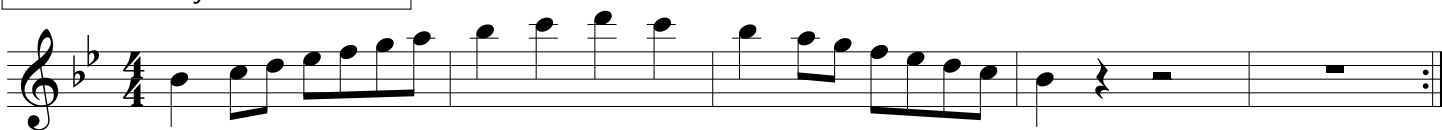
14.14 B-flat Major Scale workout



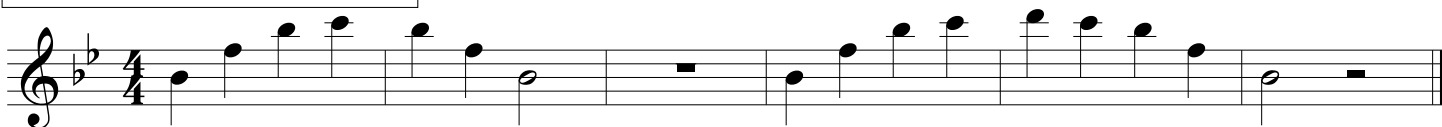
14.15 B-flat Major Scale workout



14.16 B-flat Major Scale workout

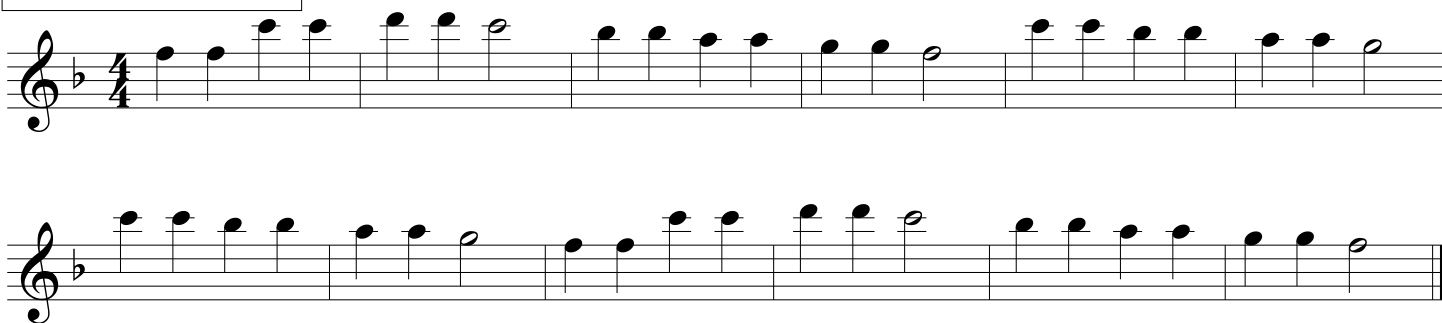


14.17 Two exercises for the brass

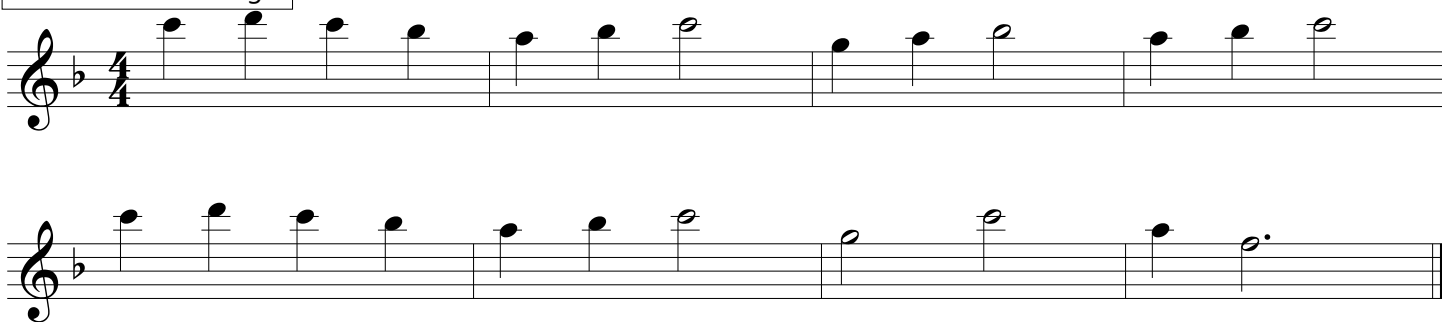


CHAPTER 15: The band will be able to count and play melodies using the notes learned in Chapters 1-14.

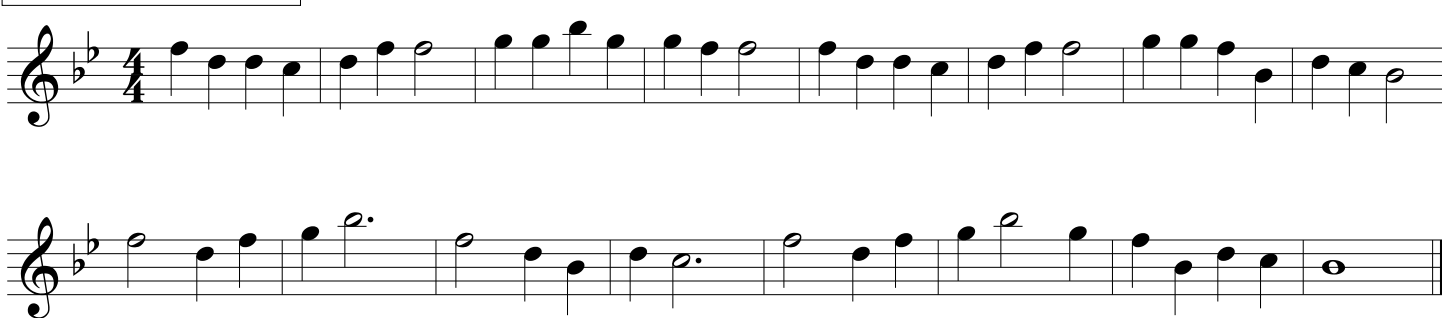
15.01 "Twinkle Twinkle"



15.02 "London Bridge"



15.03 "Jesus Loves Me"



15.04 "This Old Man"

Two staves of musical notation for the song "This Old Man". The first staff contains the first four measures, and the second staff contains the next four measures. The music is in G major (one flat) and 4/4 time. It features a simple melody with eighth and quarter notes.

15.05 "Amazing Grace"

Two staves of musical notation for the hymn "Amazing Grace". The first staff contains the first six measures, and the second staff contains the next six measures. The music is in G major (one flat) and 3/4 time. It features a simple melody with quarter and eighth notes, including a long note in the final measure of each staff.

15.06 New note!

A single staff of musical notation for the exercise "New note!". It shows a treble clef, a key signature of one flat (F major), and a single note on the second line (E4). Below the staff, the letter "E" is written. The staff is otherwise empty, with rests in the second and fourth measures.

15.07 "Yankee Doodle"

A single staff of musical notation for the song "Yankee Doodle". The music is in G major (one flat) and 4/4 time. It features a simple melody with eighth and quarter notes.

15.08 "Head Shoulders Knees And Toes"

Two staves of musical notation for the song "Head Shoulders Knees And Toes". The first staff contains the first four measures, and the second staff contains the next four measures. The music is in G major (one flat) and 4/4 time. It features a simple melody with quarter and eighth notes.

15.09 "My Country 'Tis Of Thee"

Musical score for "My Country 'Tis Of Thee" in 3/4 time, key of B-flat major. The score consists of three staves of music. The first staff begins with a treble clef, a key signature of two flats (B-flat major), and a 3/4 time signature. The melody is written in a simple, lyrical style with quarter and eighth notes. The second and third staves continue the melody, with the third staff ending with a double bar line.

15.10 "America The Beautiful"

Musical score for "America The Beautiful" in 4/4 time, key of B-flat major. The score consists of four staves of music. The first staff begins with a treble clef, a key signature of two flats (B-flat major), and a 4/4 time signature. The melody is written in a simple, lyrical style with quarter and eighth notes. The second and third staves continue the melody, with the third staff featuring a fermata over a note and a dynamic marking of 'B' above it. The fourth staff continues the melody and ends with a double bar line.

15.11 Etude

Musical score for "Etude" in 4/4 time, key of B-flat major. The score consists of two staves of music. The first staff begins with a treble clef, a key signature of two flats (B-flat major), and a 4/4 time signature. The melody is written in a simple, lyrical style with quarter and eighth notes. The second staff continues the melody and ends with a double bar line.

15.12 "Auld Lang Syne"



Musical notation for "Auld Lang Syne" in G major, 4/4 time. The melody is written on a single staff. It begins with a whole rest, followed by a series of eighth and quarter notes. The piece concludes with a double bar line.

15.13 "Eine Kleine Nachtmusik" melody, W.A. Mozart



Musical notation for the first movement of "Eine Kleine Nachtmusik" in G major, 4/4 time. The melody is written on a single staff. It begins with a forte (*f*) dynamic marking. The piece features a variety of rhythmic patterns, including eighth and sixteenth notes, and concludes with a piano (*p*) dynamic marking and a double bar line.

15.14 "Anchors Aweigh" (U.S. Navy Song)



Musical notation for "Anchors Aweigh" in G major, 4/4 time. The melody is written on a single staff. It begins with a half note, followed by a series of quarter and eighth notes. The piece concludes with a double bar line.

15.15 Chapter Fifteen Blues (swing)

Musical notation for 15.15 Chapter Fifteen Blues (swing). The piece is in 4/4 time with a key signature of two flats (B-flat and E-flat). The melody consists of three staves. The first two staves are identical. The third staff concludes the piece with a final whole note chord.

15.16 "Toe Jam" - Dickson

Musical notation for 15.16 "Toe Jam" - Dickson. The piece is in 4/4 time with a key signature of two flats. The melody consists of three staves. The first two staves are identical. The third staff concludes the piece with a final whole note chord.

15.17 "Groovy Happy Fun Times Song" - Dickson

Musical notation for 15.17 "Groovy Happy Fun Times Song" - Dickson. The piece is in 4/4 time with a key signature of two flats. The melody consists of three staves. The first staff is followed by a double bar line. The second staff begins with the instruction "Fine" and ends with a double bar line. The third staff begins with the instruction "D.C. al Fine" and ends with a double bar line.

15.18 Etude

Two staves of musical notation in 4/4 time, key of B-flat major. The first staff contains measures 1-4, and the second staff contains measures 5-8. The piece concludes with a double bar line.

15.19 "St. James Infirmary"

Two staves of musical notation in 4/4 time, key of B-flat major. The first staff contains measures 1-4, and the second staff contains measures 5-8. The piece concludes with a double bar line.

15.20 Duet (Cantabile), part 1

Two staves of musical notation in 4/4 time, key of B-flat major. The first staff contains measures 1-4, and the second staff contains measures 5-8. The word "Rall." is written above the second staff. The piece concludes with a double bar line.

15.20 Duet (Cantabile), part 2

Two staves of musical notation in 4/4 time, key of B-flat major. The first staff contains measures 1-4, and the second staff contains measures 5-8. The word "Rall." is written above the second staff. The piece concludes with a double bar line.

15.21 "Springtime Under Quarentine" - Dickson



Fine



D.C. al Fine

