

MR. DICKSON'S METHOD FOR BAND

Book Two

Trombone
Baritone

www.JustinDickson.com/Band
revised July 13, 2020

"Strategies That Work When Learning New Music"

Read before you play

- Before you play, read through the music and say the letter names of the notes out loud.
- Before you play, tizzle the rhythms. Tap your foot while you do it, to keep a steady beat.

Set up for a good first note

- Finger the first note before you start to play the song, before you breathe.
- Breathe on the beat before you start. Breathe together to play together.

While you are playing

- Tap your foot gently with the beat while you play, and count your rests.
- Look ahead while you play, so you are ready for the next thing you have to play.

Use technology to help you learn

- When practicing at home, use a tuner app like Bandmate Chromatic Tuner (free version) to check if you are playing the right notes.
- When practicing at home, use a metronome app like Tempo by Frozen Ape (free version) to make sure you are keeping a steady beat.

When you get stuck on a hard part

- First of all, it's not hard, it's just new. Keep trying, you'll get better.
- Find the notes that are difficult for you, and just play them over and over. Break it down to just 2 or 3 notes at a time, and play them as much as you can. Don't try to play the whole song yet if you really just need to work on a few tricky notes in the middle.
- Slowwwwwww downnnnnnnnn. Play it really, really, really slowly. Speed will come later.
- Say the letter names of the notes out loud. Don't just think it, you have to say it out loud or it does not help.
- Tizzle the rhythms, or say the rhythms using a "dah" syllable.
- It's not about trying hard enough, it's about trying often enough.
Don't try it 2 or 3 times and then give up. Your body needs more reps to learn new things. Try it 10-15 times, then move on to something else and come back to it later.
- Ask for help! Your teacher gets paid the big bucks to help you. Use them!

CHAPTER 10: The band will review notes and rhythms from Chapters 1-9, and strengthen their embouchure by playing melodies in a higher key. Clarinets will learn the note "low F" and be able to play melodies in their lower chalumeau register.

10.01 "Back To School Blues"

Three staves of musical notation in bass clef, 4/4 time, key of B-flat major. The first staff contains the first four measures. The second staff contains the next four measures. The third staff contains the final four measures, ending with a repeat sign. The melody consists of eighth and quarter notes, with some slurs and accents.

10.02 New note for clarinets only

A single staff of musical notation in bass clef, 4/4 time, key of B-flat major. It shows a single quarter note on the second line of the staff, representing the new note for clarinets.

10.03 Clarinet pinky power!

A single staff of musical notation in bass clef, 4/4 time, key of B-flat major. The melody consists of a sequence of quarter notes: B-flat, C, D, E-flat, F, G, A, B-flat, followed by a whole note B-flat and a repeat sign.

10.04 Five note scale

A single staff of musical notation in bass clef, 4/4 time, key of B-flat major. The melody consists of a sequence of quarter notes: B-flat, C, D, E-flat, F, followed by a whole note B-flat and a repeat sign.

10.05 "Jingle Bells"

Two staves of musical notation in bass clef, 4/4 time, key of B-flat major. The first staff contains the first four measures, and the second staff contains the next four measures. The melody is a rhythmic pattern of eighth notes.

10.06 "Four Note Blues" -Dickson

Musical notation for "Four Note Blues" in bass clef, 4/4 time, B-flat major. The piece consists of three staves of music. The first two staves contain the main melody, and the third staff contains a variation with rests.

10.07 "Happy Birthday"

Musical notation for "Happy Birthday" in bass clef, 3/4 time, B-flat major. The piece consists of two staves of music.

10.08 "Banana Boat Song"

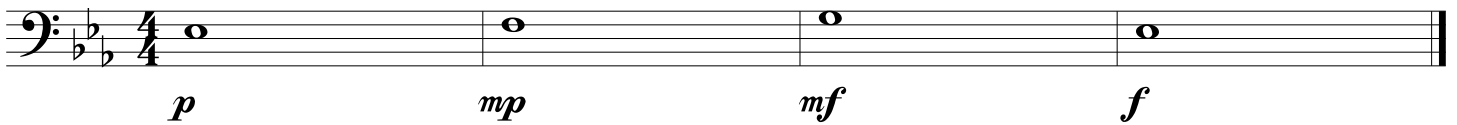
Musical notation for "Banana Boat Song" in bass clef, 4/4 time, B-flat major. The piece consists of two staves of music. The first staff ends with a double bar line and the word *Fine*. The second staff begins with *D.C. al Fine*.

10.09 "Fun Times" - Dickson

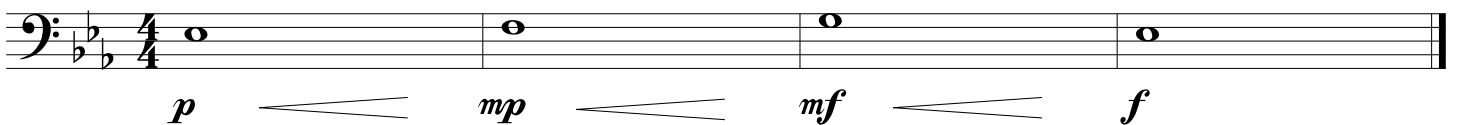


CHAPTER 11: The band will be able to identify dynamic markings on sheet music, and will be able to play melodies with dynamic contrast.

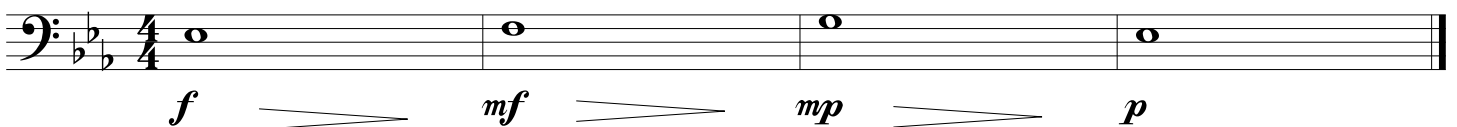
11.01 Dynamics



11.02 Crescendo



11.03 Decrescendo



11.04 Etude

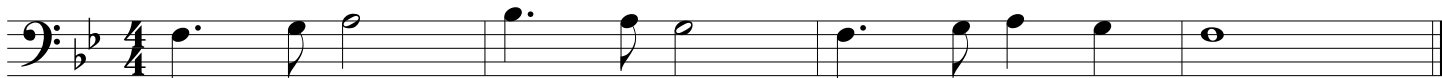


CHAPTER 12: The band will be able to count and play melodies with dotted-quarter notes.

12.01 Dotted-quarter notes



12.02 Etude



12.03 "Ode To Joy" by Ludwig Van Beethoven



Fine

D.S. al Fine



12.04 "Deck The Halls"



12.05 "U.S. Marine Corps Hymn"

Musical notation for the "U.S. Marine Corps Hymn" in bass clef, 4/4 time, B-flat major. The piece consists of four lines of music. The first line begins with a whole rest followed by a quarter note G2, then a quarter note F2, and a quarter note E2. The second line continues with a quarter note D2, a quarter note C2, a quarter note B1, and a quarter note A1. The third line continues with a quarter note G1, a quarter note F1, a quarter note E1, and a quarter note D1. The fourth line concludes with a quarter note C1, a quarter note B0, and a quarter note A0.

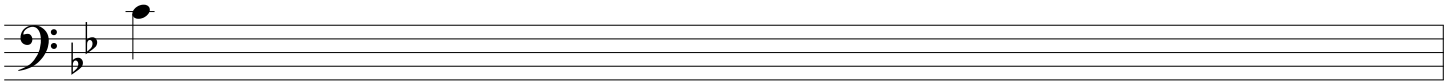
12.06 "Dotted-Quarter Blues" (swing) - Dickson

Musical notation for "Dotted-Quarter Blues" in bass clef, 4/4 time, B-flat major. The piece consists of three lines of music. The first line starts with a dotted quarter note G2, followed by an eighth note F2, a quarter note E2, and a quarter note D2. The second line continues with a dotted quarter note C2, followed by an eighth note B1, a quarter note A1, and a quarter note G1. The third line concludes with a dotted quarter note F1, followed by an eighth note E1, a quarter note D1, and a quarter note C1.

F#

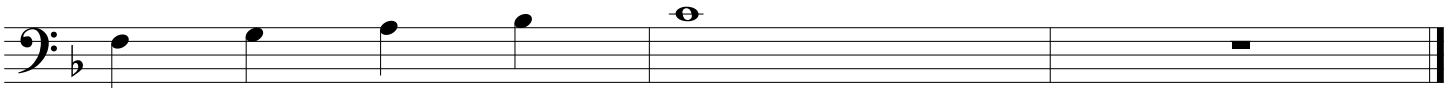
CHAPTER 13: The band will be able to read and play melodies using the new note "concert C".

13.01 New note!



C

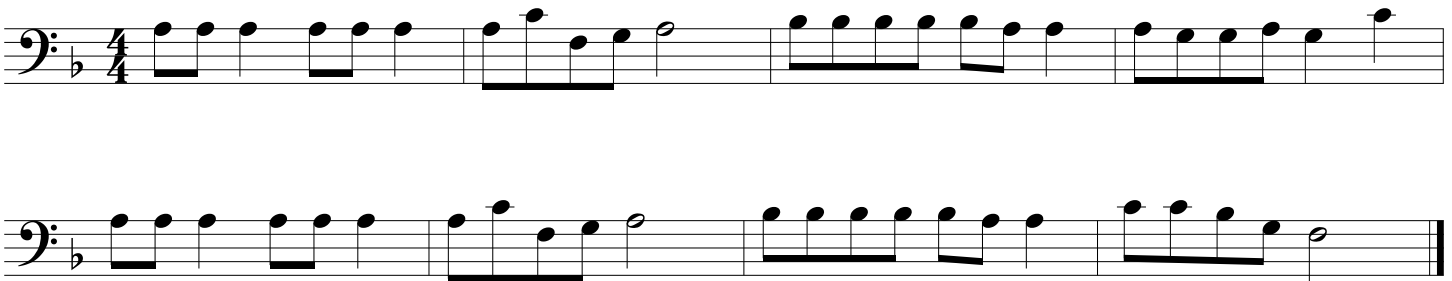
13.02 Going up



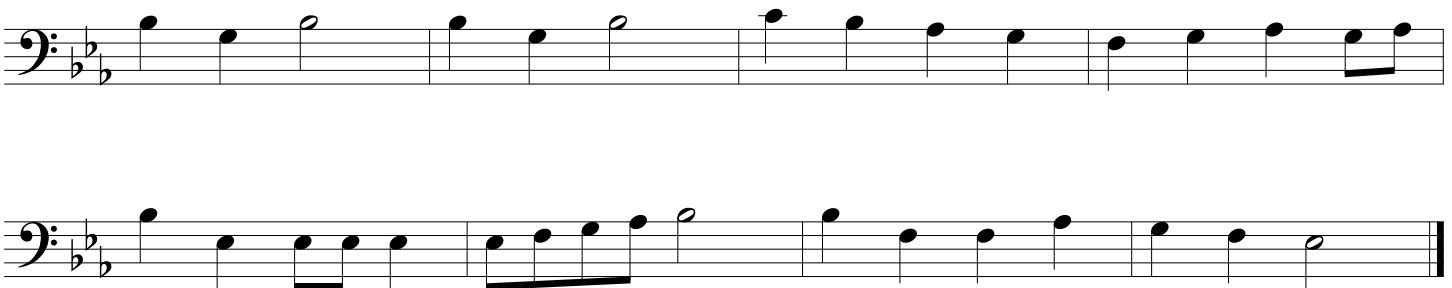
13.03 Five-note scale



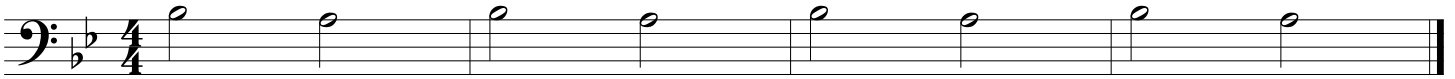
13.04 "Jingle Bells"



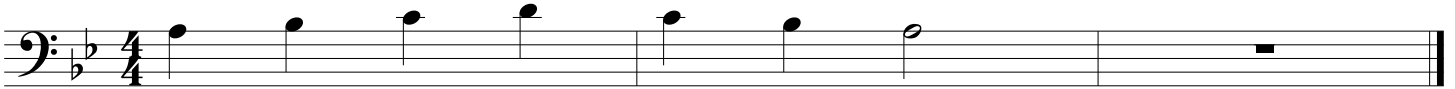
13.05 "This Old Man"



14.08 Other pinky power!

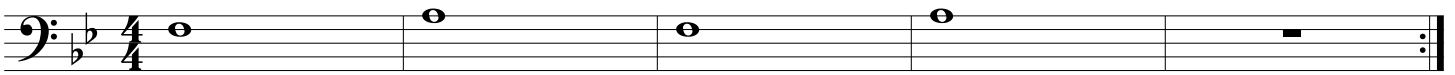


14.09 Four-note scale

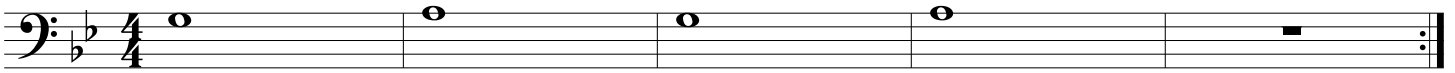


A B \flat C D C B \flat A

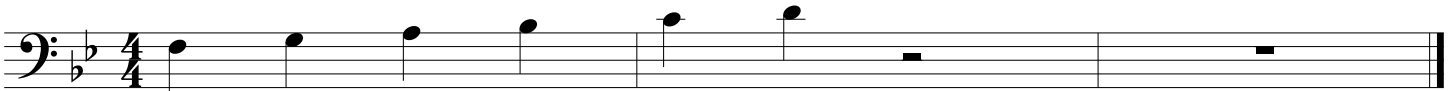
14.10 Crossing the break



14.11 Crossing the break



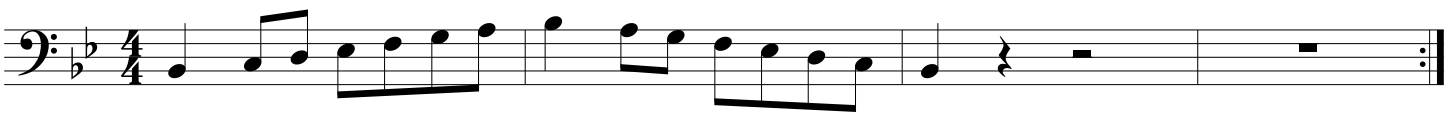
14.12 Take it slowly



14.13 You can do it



14.14 B-flat Major Scale workout



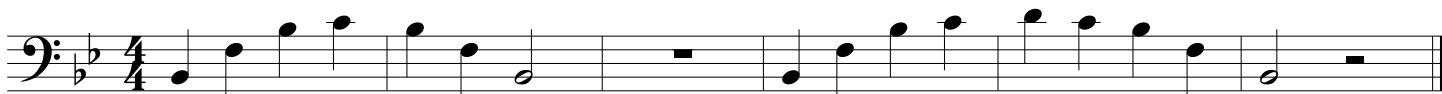
14.15 B-flat Major Scale workout



14.16 B-flat Major Scale workout



14.17 Two exercises for the brass



CHAPTER 15: The band will be able to count and play melodies using the notes learned in Chapters 1-14.

15.01 "Twinkle Twinkle"



15.02 "London Bridge"



15.03 "Jesus Loves Me"



15.04 "This Old Man"

Two staves of musical notation for the piece "This Old Man". The first staff contains the first four measures, and the second staff contains the next four measures. The music is written in bass clef with a key signature of one flat (Bb) and a common time signature (C). The melody consists of eighth and quarter notes.

15.05 "Amazing Grace"

Two staves of musical notation for the piece "Amazing Grace". The first staff contains the first four measures, and the second staff contains the next four measures. The music is written in bass clef with a key signature of one flat (Bb) and a 3/4 time signature. The melody features a mix of quarter, eighth, and half notes, with some notes beamed together.

15.06 New note!

A single staff of musical notation for the piece "New note!". It shows a bass clef, a key signature of one flat (Bb), and a common time signature (C). The first measure contains a quarter note on the line (E4), followed by two measures of rests.

E

15.07 "Yankee Doodle"

A single staff of musical notation for the piece "Yankee Doodle". It shows a bass clef, a key signature of one flat (Bb), and a 4/4 time signature. The melody is written in eighth notes.

15.08 "Head Shoulders Knees And Toes"

Two staves of musical notation for the piece "Head Shoulders Knees And Toes". The first staff contains the first four measures, and the second staff contains the next four measures. The music is written in bass clef with a key signature of one flat (Bb) and a 4/4 time signature. The melody consists of quarter and eighth notes.

15.09 "My Country 'Tis Of Thee"

Three staves of music in bass clef, 3/4 time, key of B-flat. The first staff begins with a treble clef and a key signature change to B-flat. The music consists of a series of quarter and eighth notes, with some slurs and accents. The second and third staves continue the melody with similar rhythmic patterns and some slurs.

15.10 "America The Beautiful"

Four staves of music in bass clef, 4/4 time, key of B-flat. The first staff begins with a treble clef and a key signature change to B-flat. The music features a mix of quarter, eighth, and sixteenth notes, with some slurs and accents. A 'B' marking is present above the third staff. The fourth staff concludes the piece with a double bar line.

15.11 Etude

Two staves of music in bass clef, 4/4 time, key of B-flat. The first staff begins with a treble clef and a key signature change to B-flat. The music consists of a series of quarter and eighth notes, with some slurs and accents. The second staff continues the melody with similar rhythmic patterns and concludes with a double bar line.

15.12 "Auld Lang Syne"

Two staves of musical notation for "Auld Lang Syne" in bass clef, 4/4 time. The first staff begins with a whole rest followed by a quarter note G2, then a dotted quarter note F2, and a quarter note E2. The second staff continues with a dotted quarter note D2, a quarter note C2, a quarter note B1, a quarter note A1, a quarter note G1, a quarter note F1, a quarter note E1, and a whole note D1.

15.13 "Eine Kleine Nachtmusik" melody, W.A. Mozart

Five staves of musical notation for the melody of "Eine Kleine Nachtmusik" in bass clef, 4/4 time. The first staff starts with a forte (*f*) dynamic and features eighth notes and quarter notes. The second staff continues with eighth notes and quarter notes. The third staff features sixteenth notes and quarter notes. The fourth and fifth staves feature a piano (*p*) dynamic and include a crescendo hairpin, with notes beamed together in groups.

15.14 "Anchors Aweigh" (U.S. Navy Song)

Three staves of musical notation for "Anchors Aweigh" in bass clef, 4/4 time. The first staff begins with a whole note G2, followed by a quarter note F2, a quarter note E2, a quarter note D2, a quarter note C2, a quarter note B1, a quarter note A1, a quarter note G1, and a whole note F1. The second staff continues with a quarter note E1, a quarter note D1, a quarter note C1, a quarter note B0, a quarter note A0, a quarter note G0, a quarter note F0, and a whole note E0. The third staff features a quarter note D0, a quarter note C0, a quarter note B0, a quarter note A0, a quarter note G0, a quarter note F0, a quarter note E0, and a whole note D0.

15.15 Chapter Fifteen Blues (swing)

Three staves of musical notation in bass clef, 4/4 time, and B-flat major. The first two staves are identical. The third staff concludes the piece with a double bar line.

15.16 "Toe Jam" - Dickson

Three staves of musical notation in bass clef, 4/4 time, and B-flat major. The notation includes various rhythmic patterns, slurs, and accents.

15.17 "Groovy Happy Fun Times Song" - Dickson

One staff of musical notation in bass clef, 4/4 time, and B-flat major, featuring a steady eighth-note bass line.

Fine

Second staff of musical notation for 15.17, continuing the eighth-note bass line.

D.C. al Fine

Third staff of musical notation for 15.17, concluding with a double bar line.

15.18 Etude

Two staves of musical notation in bass clef, 4/4 time, and B-flat major. The first staff contains four measures of music, and the second staff contains four measures. The piece concludes with a double bar line.

15.19 "St. James Infirmary"

Two staves of musical notation in bass clef, 4/4 time, and B-flat major. The first staff begins with a whole rest followed by four measures of music. The second staff contains four measures of music. The piece concludes with a double bar line.

15.20 Duet (Cantabile), part 1

Two staves of musical notation in bass clef, 4/4 time, and B-flat major. The first staff contains four measures of music, and the second staff contains four measures. The piece concludes with a double bar line.

Rall.

Two staves of musical notation in bass clef, 4/4 time, and B-flat major. The first staff contains four measures of music, and the second staff contains four measures. The piece concludes with a double bar line.

15.20 Duet (Cantabile), part 2

Two staves of musical notation in bass clef, 4/4 time, and B-flat major. The first staff contains four measures of music, and the second staff contains four measures. The piece concludes with a double bar line.

Rall.

Two staves of musical notation in bass clef, 4/4 time, and B-flat major. The first staff contains four measures of music, and the second staff contains four measures. The piece concludes with a double bar line.

15.21 "Springtime Under Quarantine" - Dickson



Fine



D.C. al Fine

