

MR. DICKSON'S METHOD FOR BAND

Book Two

Mallets (high)

www.JustinDickson.com/Band
revised July 13, 2020

"Strategies That Work When Learning New Music"

Read before you play

- Before you play, read through the music and say the letter names of the notes out loud.
- Before you play, tizzle the rhythms. Tap your foot while you do it, to keep a steady beat.

Set up for a good first note

- Finger the first note before you start to play the song, before you breathe.
- Breathe on the beat before you start. Breathe together to play together.

While you are playing

- Tap your foot gently with the beat while you play, and count your rests.
- Look ahead while you play, so you are ready for the next thing you have to play.

Use technology to help you learn

- When practicing at home, use a tuner app like Bandmate Chromatic Tuner (free version) to check if you are playing the right notes.
- When practicing at home, use a metronome app like Tempo by Frozen Ape (free version) to make sure you are keeping a steady beat.

When you get stuck on a hard part

- First of all, it's not hard, it's just new. Keep trying, you'll get better.
- Find the notes that are difficult for you, and just play them over and over. Break it down to just 2 or 3 notes at a time, and play them as much as you can. Don't try to play the whole song yet if you really just need to work on a few tricky notes in the middle.
- Slowwwwwww downnnnnnnn. Play it really, really, really slowly. Speed will come later.
- Say the letter names of the notes out loud. Don't just think it, you have to say it out loud or it does not help.
- Tizzle the rhythms, or say the rhythms using a "dah" syllable.
- It's not about trying hard enough, it's about trying often enough. Don't try it 2 or 3 times and then give up. Your body needs more reps to learn new things. Try it 10-15 times, then move on to something else and come back to it later.
- Ask for help! Your teacher gets paid the big bucks to help you. Use them!

10.06 "Four Note Blues" -Dickson

Musical notation for "Four Note Blues" - Dickson. The piece is in 4/4 time and B-flat major. It consists of three staves of music. The first two staves contain the main melody, and the third staff contains a variation with rests in the first two measures.

10.07 "Happy Birthday"

Musical notation for "Happy Birthday". The piece is in 3/4 time and B-flat major. It consists of two staves of music.

10.08 "Banana Boat Song"

Musical notation for "Banana Boat Song". The piece is in 4/4 time and B-flat major. It consists of two staves of music. The first staff ends with the instruction *Fine*. The second staff begins with the instruction *D.C. al Fine*.

10.09 "Fun Times" - Dickson

Three staves of musical notation in 4/4 time, key signature of two flats. The melody consists of eighth and quarter notes with various phrasing slurs.

CHAPTER 11: The band will be able to identify dynamic markings on sheet music, and will be able to play melodies with dynamic contrast.

11.01 Dynamics

Four measures of musical notation in 4/4 time, key signature of two flats. Each measure contains a single whole note. The dynamic markings are *p*, *mp*, *mf*, and *f* from left to right.

11.02 Crescendo

Four measures of musical notation in 4/4 time, key signature of two flats. Each measure contains a single whole note. The dynamic markings are *p*, *mp*, *mf*, and *f* from left to right, with crescendo hairpins connecting them.

11.03 Decrescendo

Four measures of musical notation in 4/4 time, key signature of two flats. Each measure contains a single whole note. The dynamic markings are *f*, *mf*, *mp*, and *p* from left to right, with decrescendo hairpins connecting them.

11.04 Etude

Four measures of musical notation in 4/4 time, key signature of two flats. The melody consists of eighth and quarter notes with phrasing slurs. Dynamic markings are *mp*, *f*, and *mp* from left to right, with hairpins indicating the dynamic changes.

12.05 "U.S. Marine Corps Hymn"

Musical notation for the first system of the "U.S. Marine Corps Hymn". It consists of four staves of music in 4/4 time, key of B-flat major. The melody begins with a quarter rest, followed by a quarter note G4, a quarter note A4, and a quarter note B4. The second measure contains four quarter notes: G4, A4, B4, and G4. The third measure contains a dotted quarter note G4, an eighth note A4, a quarter note B4, and a quarter note G4. The fourth measure contains a quarter note A4, a quarter note B4, a quarter note G4, and a quarter note F4. The fifth measure contains a dotted half note G4. The sixth measure contains a quarter note A4, a quarter note B4, and a quarter note G4. The seventh measure contains a dotted quarter note G4, an eighth note A4, a quarter note B4, and a quarter note G4. The eighth measure contains a dotted half note G4. The ninth measure contains a quarter note A4, a quarter note B4, and a quarter note G4. The tenth measure contains a dotted quarter note G4, an eighth note A4, a quarter note B4, and a quarter note G4. The piece ends with a double bar line.

12.06 "Dotted-Quarter Blues" (swing) - Dickson

Musical notation for the first system of "Dotted-Quarter Blues". It consists of three staves of music in 4/4 time, key of B-flat major. The melody begins with a dotted quarter note G4, an eighth note A4, a quarter note B4, and a quarter note G4. The second measure contains a dotted quarter note G4, an eighth note A4, a quarter note B4, and a quarter note G4. The third measure contains a dotted quarter note G4, an eighth note A4, a quarter note B4, and a quarter note G4. The fourth measure contains a dotted quarter note G4, an eighth note A4, a quarter note B4, and a quarter note G4. The fifth measure contains a dotted quarter note G4, an eighth note A4, a quarter note B4, and a quarter note G4. The sixth measure contains a dotted quarter note G4, an eighth note A4, a quarter note B4, and a quarter note G4. The seventh measure contains a dotted quarter note G4, an eighth note A4, a quarter note B4, and a quarter note G4. The eighth measure contains a dotted quarter note G4, an eighth note A4, a quarter note B4, and a quarter note G4. The ninth measure contains a dotted quarter note G4, an eighth note A4, a quarter note B4, and a quarter note G4. The tenth measure contains a dotted quarter note G4, an eighth note A4, a quarter note B4, and a quarter note G4. The piece ends with a double bar line.

F#

CHAPTER 13: The band will be able to read and play melodies using the new note "concert C".

13.01 New note!

A single treble clef staff in B-flat major (one flat) showing a single quarter note on the first line, labeled 'C' below it.

13.02 Going up

A single treble clef staff in B-flat major showing a sequence of five quarter notes ascending: B-flat, C, D, E, F, followed by a whole rest.

13.03 Five-note scale

A single treble clef staff in B-flat major with a 4/4 time signature. It shows a five-note scale: B-flat, C, D, E, F, followed by a whole rest.

13.04 "Jingle Bells"

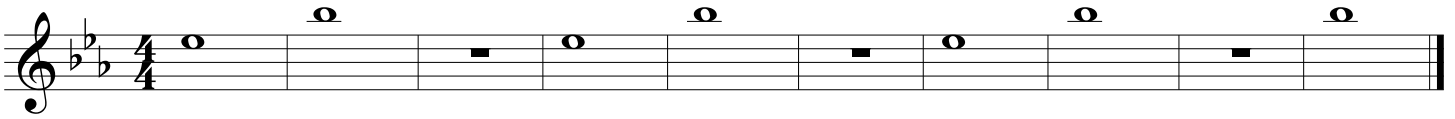
Two staves of musical notation for "Jingle Bells" in B-flat major and 4/4 time. The first staff contains the first four measures, and the second staff contains the next four measures, ending with a double bar line.

13.05 "This Old Man"

Two staves of musical notation for "This Old Man" in B-flat major. The first staff contains the first four measures, and the second staff contains the next four measures, ending with a double bar line.

CHAPTER 14: The band will be able to read and play melodies using the new note "concert D". Clarinets will be able to read and play melodies using the notes of their clarion (upper) register.

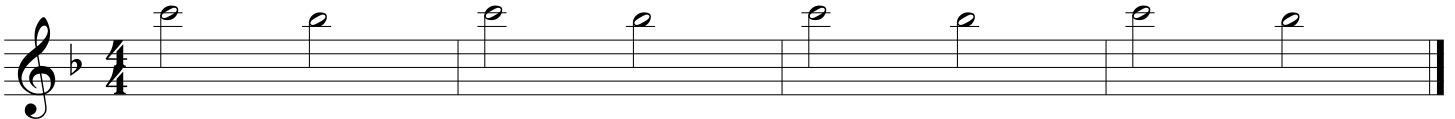
14.01 Clarinet high C



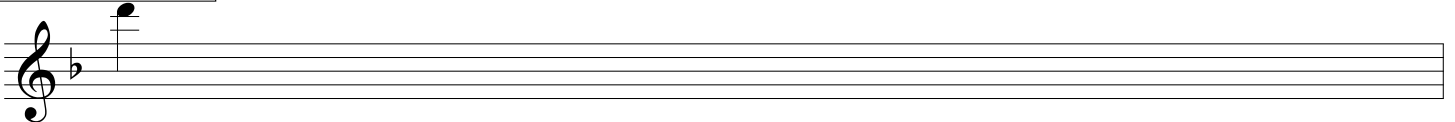
14.02 Clarinet high D



14.03 Clarinet pinky power

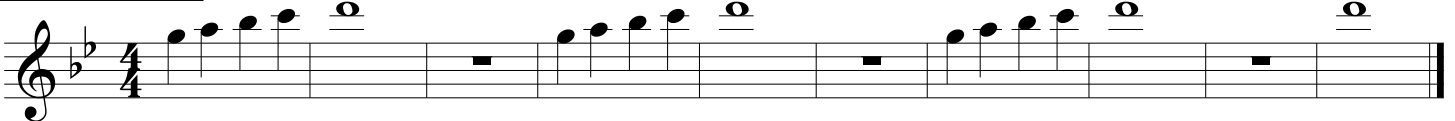


14.04 New note!

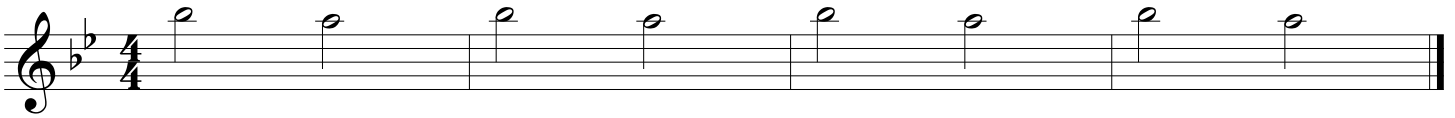


D

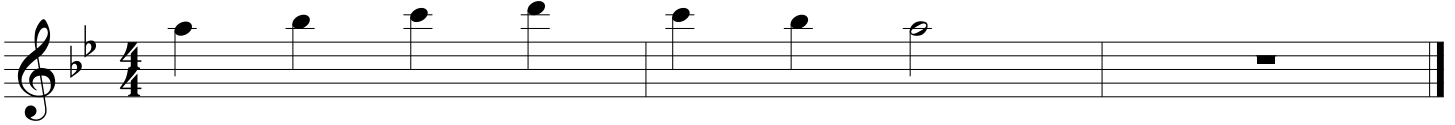
14.05 Going up



14.08 Other pinky power!

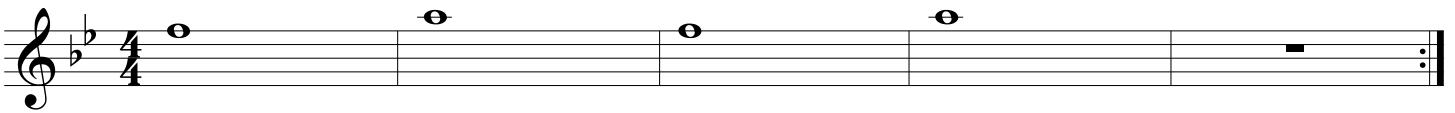


14.09 Four-note scale

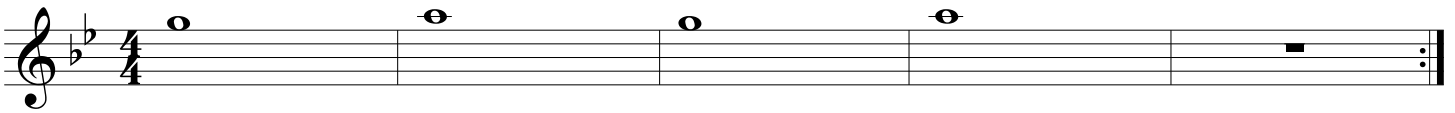


A B \flat C D C B \flat A

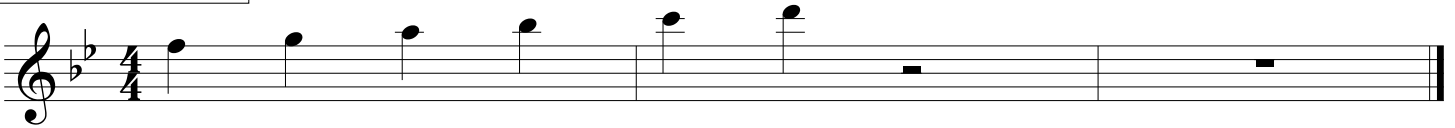
14.10 Crossing the break



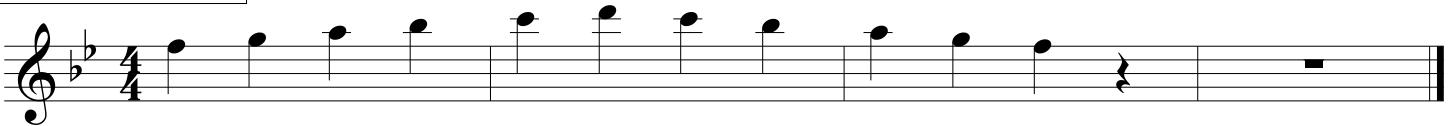
14.11 Crossing the break



14.12 Take it slowly



14.13 You can do it



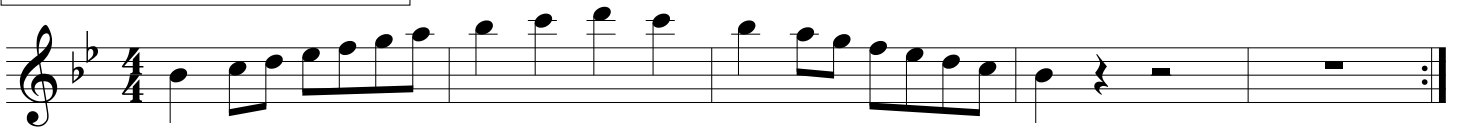
14.14 B-flat Major Scale workout



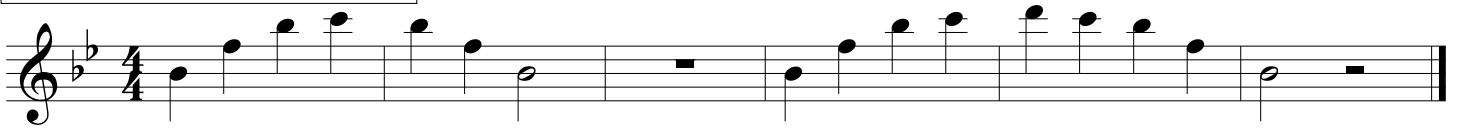
14.15 B-flat Major Scale workout



14.16 B-flat Major Scale workout

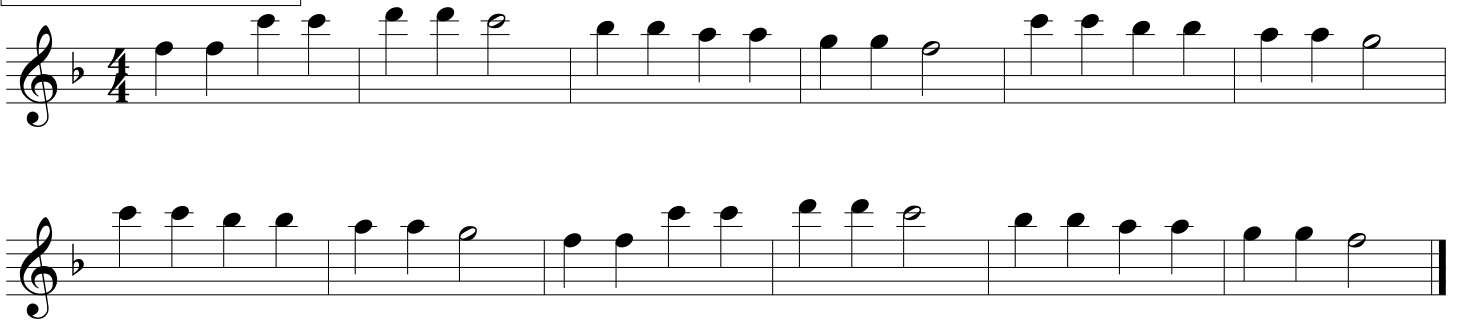


14.17 Two exercises for the brass

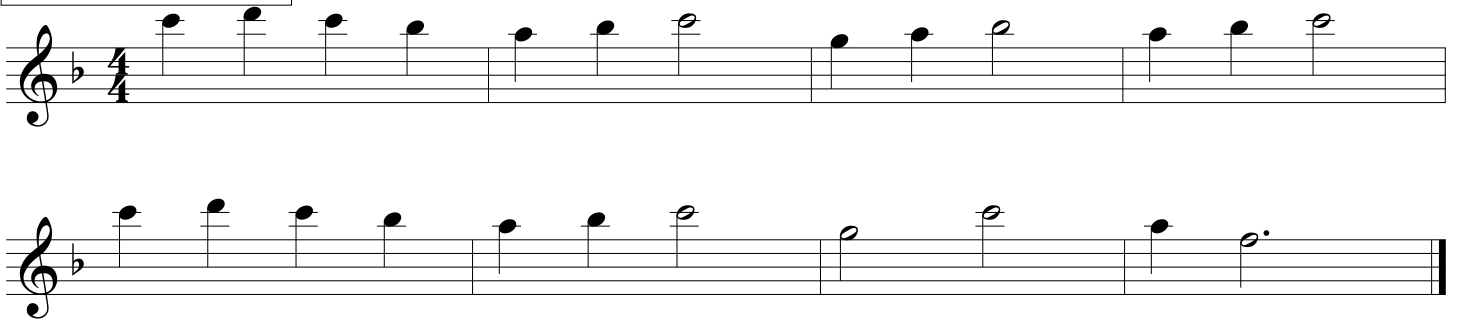


CHAPTER 15: The band will be able to count and play melodies using the notes learned in Chapters 1-14.

15.01 "Twinkle Twinkle"



15.02 "London Bridge"



15.03 "Jesus Loves Me"



15.04 "This Old Man"

Two staves of musical notation for the song "This Old Man". The first staff contains the first four measures, and the second staff contains the next four measures. The music is in G major (one flat) and 4/4 time. It features a simple melody with quarter and eighth notes.

15.05 "Amazing Grace"

Two staves of musical notation for the hymn "Amazing Grace". The first staff contains the first four measures, and the second staff contains the next four measures. The music is in G major (one flat) and 3/4 time. It features a simple melody with quarter and eighth notes, including a long note in the final measure of the second staff.

15.06 New note!

A single staff of musical notation for the exercise "New note!". It shows a treble clef, a key signature of one flat (F major), and a single note on the second line (E4). Below the staff, the letter "E" is written.

15.07 "Yankee Doodle"

A single staff of musical notation for the song "Yankee Doodle". The music is in G major (one flat) and 4/4 time. It features a simple melody with eighth and quarter notes.

15.08 "Head Shoulders Knees And Toes"

Two staves of musical notation for the song "Head Shoulders Knees And Toes". The first staff contains the first four measures, and the second staff contains the next four measures. The music is in G major (one flat) and 4/4 time. It features a simple melody with quarter and eighth notes.

15.09 "My Country 'Tis Of Thee"

Musical score for "My Country 'Tis Of Thee" in 3/4 time, key of B-flat major. The score consists of three staves of music. The first staff begins with a treble clef, a key signature of one flat (B-flat), and a 3/4 time signature. The melody is written in a simple, lyrical style with quarter and half notes. The second staff continues the melody with similar note values. The third staff concludes the piece with a double bar line.

15.10 "America The Beautiful"

Musical score for "America The Beautiful" in 4/4 time, key of B-flat major. The score consists of four staves of music. The first staff begins with a treble clef, a key signature of one flat (B-flat), and a 4/4 time signature. The melody is written in a simple, lyrical style with quarter and half notes. The second staff continues the melody. The third staff includes a dynamic marking 'B' above the staff. The fourth staff concludes the piece with a double bar line.

15.11 Etude

Musical score for "Etude" in 4/4 time, key of B-flat major. The score consists of two staves of music. The first staff begins with a treble clef, a key signature of one flat (B-flat), and a 4/4 time signature. The melody is written in a simple, lyrical style with quarter and half notes. The second staff continues the melody and concludes with a double bar line.

15.12 "Auld Lang Syne"

Musical notation for "Auld Lang Syne" in G major, 4/4 time. The piece consists of two staves of music. The first staff begins with a whole rest followed by a quarter rest, then a series of eighth and quarter notes. The second staff continues the melody with similar rhythmic patterns, ending with a double bar line.

15.13 "Eine Kleine Nachtmusik" melody, W.A. Mozart

Musical notation for the melody of "Eine Kleine Nachtmusik" in G major, 4/4 time. The piece consists of five staves of music. The first staff begins with a dynamic marking of *f* (forte) and features eighth notes with slurs. The second staff continues with eighth notes and slurs. The third staff features a crescendo hairpin and a dynamic marking of *p* (piano). The fourth and fifth staves continue the melody with slurs and dynamic markings, ending with a double bar line.

15.14 "Anchors Aweigh" (U.S. Navy Song)

Musical notation for "Anchors Aweigh" in G major, 4/4 time. The piece consists of three staves of music. The first staff begins with a whole note followed by quarter notes. The second staff continues with quarter notes and slurs. The third staff features quarter notes and slurs, ending with a double bar line.

15.15 Chapter Fifteen Blues (swing)

Musical notation for 15.15 Chapter Fifteen Blues (swing). The piece is in 4/4 time with a key signature of two flats (B-flat and E-flat). The melody consists of three staves. The first two staves are identical. The third staff concludes the piece with a final whole note chord.

15.16 "Toe Jam" - Dickson

Musical notation for 15.16 "Toe Jam" - Dickson. The piece is in 4/4 time with a key signature of two flats. The melody consists of three staves. The first two staves are identical. The third staff concludes the piece with a final whole note chord.

15.17 "Groovy Happy Fun Times Song" - Dickson

Musical notation for 15.17 "Groovy Happy Fun Times Song" - Dickson. The piece is in 4/4 time with a key signature of two flats. The melody consists of three staves. The first staff is followed by a double bar line. The second staff begins with the instruction "Fine" above it. The third staff begins with the instruction "D.C. al Fine" above it and concludes with a double bar line.

15.18 Etude

Two staves of musical notation for Etude 15.18. The first staff begins with a treble clef, a 4/4 time signature, and a key signature of one flat (B-flat). The melody consists of eighth and quarter notes. The second staff continues the melody, ending with a double bar line.

15.19 "St. James Infirmary"

Two staves of musical notation for "St. James Infirmary". The first staff begins with a treble clef, a 4/4 time signature, and a key signature of two flats (B-flat and E-flat). The melody features a mix of eighth and quarter notes with some rests. The second staff continues the melody, ending with a double bar line.

15.20 Duet (Cantabile), part 1

Two staves of musical notation for Duet (Cantabile), part 1. The first staff begins with a treble clef, a 4/4 time signature, and a key signature of two flats. The melody is characterized by long, flowing lines with slurs. The second staff continues the melody, ending with a double bar line. A *Rall.* marking is placed above the second staff.

15.20 Duet (Cantabile), part 2

Two staves of musical notation for Duet (Cantabile), part 2. The first staff begins with a treble clef, a 4/4 time signature, and a key signature of two flats. The melody continues with slurs. The second staff continues the melody, ending with a double bar line. A *Rall.* marking is placed above the second staff.

15.21 "Springtime Under Quarentine" - Dickson



Fine



D.C. al Fine

