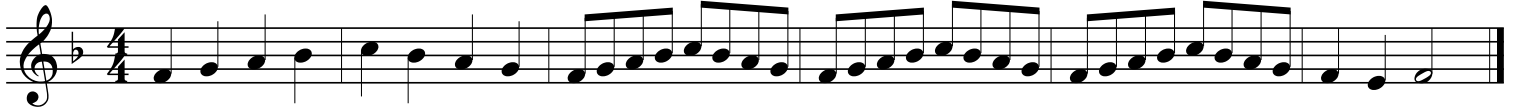


Fundamentals For Band

6.01 Six-Note Scale in Bb



6.02 Six-Note Scale in Eb



6.03 Six-Note Scale in F



6.04 Six-Note Scale in G Minor



6.05 Six-Note Scale in Ab



6.06 Six-Note Scale in C



7. Technical Etude



Fundamentals For Band

8. Expanding Intervals

stop-2-3-breathe

Expanding Intervals exercise in 4/4 time, consisting of six staves. Each staff begins with a whole note followed by a 2-measure rest, then a 3-measure rest, and finally a 4-measure rest. The notes are: Staff 1: C4, D4, E4, F4; Staff 2: D4, E4, F4, G4; Staff 3: E4, F4, G4, A4; Staff 4: F4, G4, A4, B4; Staff 5: G4, A4, B4, C5; Staff 6: A4, B4, C5, D5.

9. Chromatic Scale

Chromatic Scale exercise in 4/4 time, consisting of one staff with notes: A, B \flat , B, C, C \sharp , D, E \flat , E, F, F \sharp , G, G \sharp , A, B \flat , B, C, C \sharp , D, E \flat , E.

10. Melody: "The Water Is Wide"

Melody for "The Water Is Wide" in 4/4 time, consisting of two staves. The melody is written in a key with one flat (B \flat) and features a 4-measure rest at the beginning of each staff. The notes are: Staff 1: G \flat 4, A4, B4, C5, B4, A4, G \flat 4, F4, E4, D4, C4, B3, A3, G \flat 3; Staff 2: G \flat 4, A4, B4, C5, B4, A4, G \flat 4, F4, E4, D4, C4, B3, A3, G \flat 3.

Happy Birthday

Melody for "Happy Birthday" in 3/4 time, consisting of one staff. The melody is written in a key with one flat (B \flat) and features a 4-measure rest at the beginning. The notes are: G \flat 4, A4, B4, C5, B4, A4, G \flat 4, F4, E4, D4, C4, B3, A3, G \flat 3.