

Trombone
Baritone

Fundamentals For Band

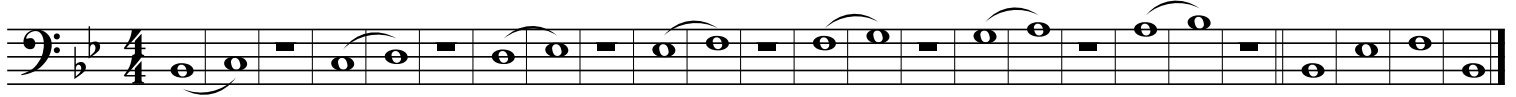
Listen
Count
Tap your foot
Breathe together
Watch
Have Fun

1. Starting Note

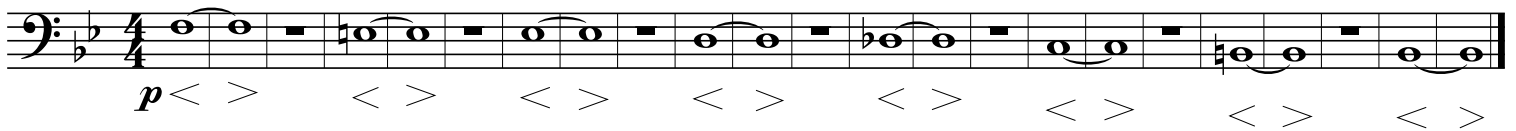


2.01 Long Tones

stop-2-3-breathe



2.02 Long Tones



3.01 Articulation



3.02 Articulation



4. Flexibility



5.01 Major Scale in Bb



5.02 Major Scale in Ab



5.03 Major Scale in Eb



Fundamentals For Band

6.01 Six-Note Scale in Bb

Musical notation for 6.01 Six-Note Scale in Bb. The piece is in bass clef, 4/4 time, and B-flat major. It consists of 16 measures: four measures of quarter notes (Bb, C, D, Eb), four measures of eighth notes (Bb, C, D, Eb), four measures of sixteenth notes (Bb, C, D, Eb), and four measures of quarter notes (Bb, C, D, Eb).

6.02 Six-Note Scale in Eb

Musical notation for 6.02 Six-Note Scale in Eb. The piece is in bass clef, 4/4 time, and E-flat major. It consists of 16 measures: four measures of quarter notes (Eb, F, G, Ab), four measures of eighth notes (Eb, F, G, Ab), four measures of sixteenth notes (Eb, F, G, Ab), and four measures of quarter notes (Eb, F, G, Ab).

6.03 Six-Note Scale in F

Musical notation for 6.03 Six-Note Scale in F. The piece is in bass clef, 4/4 time, and F major. It consists of 16 measures: four measures of quarter notes (F, G, A, Bb), four measures of eighth notes (F, G, A, Bb), four measures of sixteenth notes (F, G, A, Bb), and four measures of quarter notes (F, G, A, Bb).

6.04 Six-Note Scale in G Minor

Musical notation for 6.04 Six-Note Scale in G Minor. The piece is in bass clef, 4/4 time, and G minor. It consists of 16 measures: four measures of quarter notes (G, Ab, Bb, C), four measures of eighth notes (G, Ab, Bb, C), four measures of sixteenth notes (G, Ab, Bb, C), and four measures of quarter notes (G, Ab, Bb, C).

6.05 Six-Note Scale in Ab

Musical notation for 6.05 Six-Note Scale in Ab. The piece is in bass clef, 4/4 time, and A-flat major. It consists of 16 measures: four measures of quarter notes (Ab, Bb, C, D), four measures of eighth notes (Ab, Bb, C, D), four measures of sixteenth notes (Ab, Bb, C, D), and four measures of quarter notes (Ab, Bb, C, D).

6.06 Six-Note Scale in C

Musical notation for 6.06 Six-Note Scale in C. The piece is in bass clef, 4/4 time, and C major. It consists of 16 measures: four measures of quarter notes (C, D, E, F), four measures of eighth notes (C, D, E, F), four measures of sixteenth notes (C, D, E, F), and four measures of quarter notes (C, D, E, F).

7. Technical Etude

Musical notation for 7. Technical Etude, first staff. The piece is in bass clef, 4/4 time, and B-flat major. It consists of 16 measures: four measures of quarter notes (Bb, C, D, Eb), four measures of eighth notes (Bb, C, D, Eb), four measures of sixteenth notes (Bb, C, D, Eb), and four measures of quarter notes (Bb, C, D, Eb).

Musical notation for 7. Technical Etude, second staff. The piece is in bass clef, 4/4 time, and B-flat major. It consists of 16 measures: four measures of quarter notes (Bb, C, D, Eb), four measures of eighth notes (Bb, C, D, Eb), four measures of sixteenth notes (Bb, C, D, Eb), and four measures of quarter notes (Bb, C, D, Eb).

Musical notation for 7. Technical Etude, third staff. The piece is in bass clef, 4/4 time, and B-flat major. It consists of 16 measures: four measures of quarter notes (Bb, C, D, Eb), four measures of eighth notes (Bb, C, D, Eb), four measures of sixteenth notes (Bb, C, D, Eb), and four measures of quarter notes (Bb, C, D, Eb).

Musical notation for 7. Technical Etude, fourth staff. The piece is in bass clef, 4/4 time, and B-flat major. It consists of 16 measures: four measures of quarter notes (Bb, C, D, Eb), four measures of eighth notes (Bb, C, D, Eb), four measures of sixteenth notes (Bb, C, D, Eb), and four measures of quarter notes (Bb, C, D, Eb).

Fundamentals For Band

8. Expanding Intervals

stop-2-3-breathe

Musical notation for Expanding Intervals exercise, featuring six staves of bass clef music in 4/4 time with a key signature of two flats. The exercise consists of six ascending lines, each with a four-measure phrase followed by a whole rest, and six descending lines, each with a four-measure phrase followed by a whole rest. The intervals between notes expand and then contract across the lines.

9. Chromatic Scale

Musical notation for Chromatic Scale exercise, featuring a single staff of bass clef music in 4/4 time with a key signature of two flats. The scale consists of two lines: an ascending line from G to D and a descending line from G to D.

G A \flat A B \flat B C D \flat D E \flat E F F \sharp G A \flat A B \flat B C D \flat D

10. Melody: "The Water Is Wide"

Musical notation for the melody "The Water Is Wide", featuring two staves of bass clef music in 4/4 time with a key signature of two flats. The melody is presented in two lines, with the second line continuing from the first. It includes various note values and rests.

Happy Birthday

Musical notation for the melody "Happy Birthday", featuring a single staff of bass clef music in 3/4 time with a key signature of two flats. The melody begins with two rests followed by the first notes of the song.